

Recombinant Rat Idh1 protein, His-tagged

Cat. No. Idh1-1584R Lot. No. (See product label)

SPECIFICATION

Product Overview	Recombinant Rat Idh1 aa. (Pro78~Ile330 (Accession # P41562)) fused with N-terminal His tag was produced in E. coli cells.
Species	Rat
Source	E.coli
ProteinLength	Pro78~Ile330
Description	Catalyzes oxidative decarboxylation of citrate; cytosolic NADP+-dependent isozyme.
Form	Freeze-dried powder
Molecular Mass	Predicted Molecular Mass: 30.2kDa
Endotoxin	<1.0EU per 1ug (determined by the LAL method)
Purity	>95%
Applications	SDS-PAGE; WB; ELISA; IP.
Stability	The thermal stability is described by the loss rate. The loss rate was determined by accelerated thermal degradation test, that is, incubate the protein at 37°C for 48h, and no obvious degradation and precipitation were observed. The loss rate is less than 5% within the expiration date under appropriate storage condition.

 Tel: 1-631-559-9269 1-516-512-3133

 Email: info@creative-biomart.com  Fax: 1-631-938-8127

 45-1 Ramsey Road, Shirley, NY 11967, USA

Storage	Avoid repeated freeze/thaw cycles. Store at 2-8°C for one month. Aliquot and store at -80°C for 12 months.
Storage buffer	Supplied as lyophilized form in PBS, pH7.4, containing 5% sucrose, 0.01% sarcosyl.
Reconstitution	Reconstitute in sterile PBS, pH7.2-pH7.4.
Isoelectric Point	7.8

GENE INFORMATION

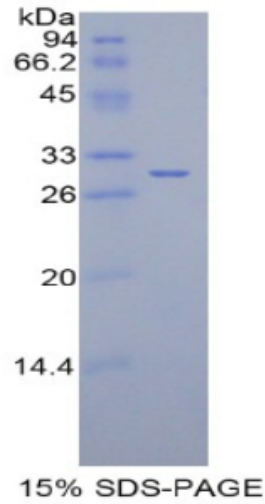
Gene Name	ldh1 isocitrate dehydrogenase (NADP(+)) 1, cytosolic [Rattus norvegicus (Norway rat)]
Official Symbol	ldh1
Synonyms	ldh1; isocitrate dehydrogenase (NADP(+)) 1, cytosolic; isocitrate dehydrogenase [NADP] cytoplasmic; IDH; IDP; Isocitrate dehydrogenase 1, soluble; NADP(+)-specific ICDH; cytosolic NADP-isocitrate dehydrogenase; isocitrate dehydrogenase 1 (NADP+), soluble; oxalosuccinate decarboxylase
Gene ID	24479
mRNA Refseq	NM_031510.1
Protein Refseq	NP_113698.1
UniProt ID	P41562

 Tel: 1-631-559-9269 1-516-512-3133

 Email: info@creative-biomart.com  Fax: 1-631-938-8127

 45-1 Ramsey Road, Shirley, NY 11967, USA

SDS-PAGE



 Tel: 1-631-559-9269 1-516-512-3133

 Email: info@creative-biomart.com  Fax: 1-631-938-8127

 45-1 Ramsey Road, Shirley, NY 11967, USA