

Recombinant Mouse Ido1 Protein (Met1-Pro407), N-His tagged

Cat. No. Ido1-6730M **Lot. No.** (See product label)

SPECIFICATION

Product Overview	Recombinant mouse Ido1 (Met1-Pro407) fused with the N-terminal His tag was expressed in E. coli.
Species	Mouse
Source	E.coli
ProteinLength	Met1-Pro407
Description	Enables tryptophan 2, 3-dioxygenase activity. Acts upstream of or within several processes, including carboxylic acid metabolic process; regulation of apoptotic process; and regulation of cytokine production. Located in smooth muscle contractile fiber and stereocilium bundle. Is expressed in cerebral cortex; corpus striatum; embryo; extraembryonic component; and hippocampus. Used to study pre-eclampsia. Orthologous to human IDO1 (indoleamine 2, 3-dioxygenase 1).
Form	Lyophilized powder/frozen liquid
Molecular Mass	44.77 kDa
Purity	> 90 % as determined by SDS-PAGE
Notes	For research use only.
Storage	Use a manual defrost freezer and avoid repeated freeze thaw cycles. Store at 2 to 8

 Tel: 1-631-559-9269 1-516-512-3133

 Email: info@creative-biomart.com  Fax: 1-631-938-8127

 45-1 Ramsey Road, Shirley, NY 11967, USA



centigrade for one week. Store at -20 to -80 centigrade for twelve months from the date of receipt.

Storage Buffer Supplied as solution form in PBS or lyophilized from PBS.

Reconstitution Reconstitute in sterile water for a stock solution.

Shipping They are shipped out with dry ice/blue ice unless customers require otherwise.

GENE INFORMATION

Gene Name [Ido1 indoleamine 2, 3-dioxygenase 1 \[Mus musculus \(house mouse\) \]](#)

Official Symbol [Ido1](#)

Synonyms Ido1; indoleamine 2, 3-dioxygenase 1; Ido; Indo; indoleamine 2, 3-dioxygenase 1; IDO-1; indole 2, 3-dioxygenase; indoleamine-pyrrole 2, 3 dioxygenase; EC 1.13.11.52

Gene ID [15930](#)

mRNA Refseq [NM_008324](#)

Protein Refseq [NP_032350](#)

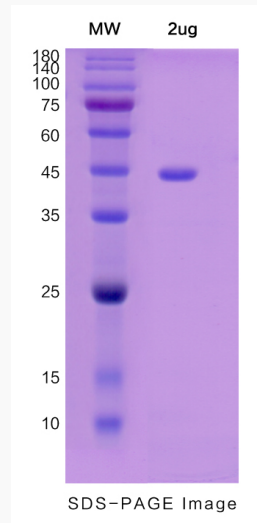
UniProt ID [P28776](#)

 Tel: 1-631-559-9269 1-516-512-3133

 Email: info@creative-biomart.com  Fax: 1-631-938-8127

 45-1 Ramsey Road, Shirley, NY 11967, USA

SDS-PAGE



 Tel: 1-631-559-9269 1-516-512-3133

 Email: info@creative-biomart.com  Fax: 1-631-938-8127

 45-1 Ramsey Road, Shirley, NY 11967, USA