

Recombinant Mouse Ifi204 protein, His-tagged

Cat. No. Ifi204-642M Lot. No. (See product label)

SPECIFICATION

Product Overview	Recombinant Mouse Ifi204 protein(P0DOV2)(216-417aa), fused with N-terminal His tag, was expressed in E.coli.
Species	Mouse
Source	E.coli
ProteinLength	216-417aa
Form	If the delivery form is liquid, the default storage buffer is Tris/PBS-based buffer, 5%-50% glycerol. If the delivery form is lyophilized powder, the buffer before lyophilization is Tris/PBS-based buffer, 6% Trehalose, pH 8.0.
Molecular Mass	28.7 kDa
Purity	Greater than 85% as determined by SDS-PAGE.
Storage	Store at -20°C/-80°C upon receipt, aliquoting is necessary for mutiple use. Avoid repeated freeze-thaw cycles.
Reconstitution	We recommend that this vial be briefly centrifuged prior to opening to bring the contents to the bottom. Please reconstitute protein in deionized sterile water to a concentration of 0.1-1.0 mg/mL. We recommend to add 5-50% of glycerol (final concentration) and aliquot for long-term storage at -20°C/-80°C.

 Tel: 1-631-559-9269 1-516-512-3133

 Email: info@creative-biomart.com  Fax: 1-631-938-8127

 45-1 Ramsey Road, Shirley, NY 11967, USA

AA Sequence

QNIPRGAVLHSEPLTVMVLATDPFEYESPEHEVKNMLHATVATVSQYFHVKVFNIN
LKEKFTKKNFIIISNYFESKGILEINETSSVLEAAPDQMIEVPNSIIRNANASPKICDIQKG
TSGAVFYGVFTLHKKTVNRKNTIYEIKDGSIEVVGSGKWHNINCKEGDKLHLFCF
HLKTIDRQPKLVCGEHSFIKISKRGN

GENE INFORMATION

Gene Name [Ifi204 interferon activated gene 204 \[Mus musculus \]](#)

Official Symbol [Ifi204](#)

Synonyms IFI204; interferon activated gene 204; interferon-activable protein 204; ifi-204; interferon-inducible protein p204; interferon, gamma-inducible gene 204; interferon, gamma-inducible protein 16; p204; Ifi16;

Gene ID [15951](#)

mRNA Refseq [NM_008329](#)

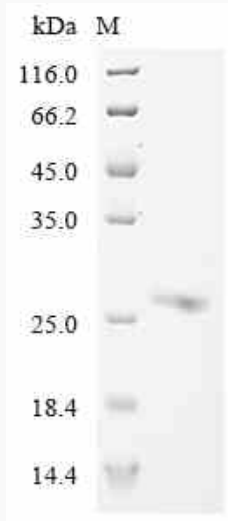
Protein Refseq [NP_032355](#)

 Tel: 1-631-559-9269 1-516-512-3133

 Email: info@creative-biomart.com  Fax: 1-631-938-8127

 45-1 Ramsey Road, Shirley, NY 11967, USA

SDS-PAGE



 Tel: 1-631-559-9269 1-516-512-3133

 Email: info@creative-biomart.com  Fax: 1-631-938-8127

 45-1 Ramsey Road, Shirley, NY 11967, USA