

## Recombinant Rat Ifna1 protein, His-tagged

Cat. No. Ifna1-487R Lot. No. (See product label)

### SPECIFICATION

<b>Product Overview</b>	Recombinant Rat Ifna1 (P05011) aa. (Cys24~Ser192) fused with His tag was produced in HEK293F cells.
<b>Species</b>	Rat
<b>Source</b>	HEK293
<b>ProteinLength</b>	Cys24~Ser192
<b>Form</b>	Freeze-dried powder
<b>Molecular Mass</b>	Predicted Molecular Mass: 21kDa; Accurate Molecular Mass: 22kDa as determined by SDS-PAGE reducing conditions.
<b>Endotoxin</b>	<1.0EU per 1ug (determined by the LAL method)
<b>Purity</b>	> 97%
<b>Characteristic</b>	Isoelectric point is 7.8.
<b>Applications</b>	SDS-PAGE; WB; ELISA; IP; CoIP; EMSA; Reporter Assays; Purification; Amine Reactive Labeling
<b>Stability</b>	The thermal stability is described by the loss rate. The loss rate was determined by accelerated thermal degradation test, that is, incubate the protein at 37°C for 48h,

 Tel: 1-631-559-9269 1-516-512-3133

 Email: [info@creative-biomart.com](mailto:info@creative-biomart.com)  Fax: 1-631-938-8127

 45-1 Ramsey Road, Shirley, NY 11967, USA

and no obvious degradation and precipitation were observed. The loss rate is less than 5% within the expiration date under appropriate storage condition.

**Storage**

Avoid repeated freeze/thaw cycles. Store at 2-8°C for one month. Aliquot and store at -80°C for 12 months.

**Concentration**

200ug/mL

**Storage buffer**

20mM Tris, 150mM NaCl, pH8.0, containing 1mM EDTA, 1mM DTT, 5% Trehalose and Proclin300.

**Reconstitution**

Reconstitute in 20mM Tris, 150mM NaCl (pH8.0) to a concentration of 0.1-1.0 mg/mL.  
Do not vortex

## GENE INFORMATION

**Gene Name**

[Ifna1 interferon-alpha 1 \[ Rattus norvegicus \(Norway rat\) \]](#)

**Official Symbol**

[Ifna1](#)

**Synonyms**

Ifna1; interferon-alpha 1; IFN-alpha1; interferon alpha-1

**Gene ID**

[298210](#)

**mRNA Refseq**

[NM\\_001014786.1](#)

**Protein Refseq**

[NP\\_001014786.1](#)

**UniProt ID**

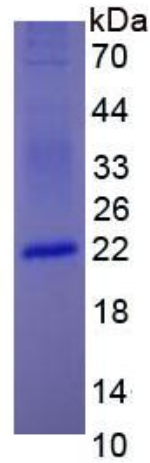
[P05011](#)

 Tel: 1-631-559-9269 1-516-512-3133

 Email: [info@creative-biomart.com](mailto:info@creative-biomart.com)  Fax: 1-631-938-8127

 45-1 Ramsey Road, Shirley, NY 11967, USA

**SDS-PAGE**



 Tel: 1-631-559-9269 1-516-512-3133

 Email: [info@creative-biomart.com](mailto:info@creative-biomart.com)  Fax: 1-631-938-8127

 45-1 Ramsey Road, Shirley, NY 11967, USA