

# Recombinant Hamster Ifng Protein, Met1-Ile174, C-His tagged

Cat. No. Ifng-019H    Lot. No. (See product label)

## SPECIFICATION

|                         |  |
|-------------------------|--|
| <b>Product Overview</b> | Recombinant Hamster Ifng Protein (Met1-Ile174) with C-His tag was expressed in HEK293.   |
| <b>Species</b>          | Hamster  |
| <b>Source</b>           | HEK293   |
| <b>ProteinLength</b>    | Met1-Ile174  |
| <b>Description</b>      | Interferon gamma (IFN $\gamma$ ) is a dimerized soluble cytokine that is predominately produced by natural killer and natural killer T cells during the innate immune response and by T cells once antigen specific immunity develops. IFN $\gamma$ is crucial for immunity against intracellular pathogens and for tumor control. The release of IFN $\gamma$ is controlled mostly by the cytokines IL-12 and IL-18. Serum IFN $\gamma$ levels have been shown to be elevated in active cases of systemic lupus erythematosus (SLE) and may be associated with the development of autoimmune diseases like SLE. |
| <b>Form</b>             | Lyophilized  |
| <b>Molecular Mass</b>   | Predicted Molecular Mass: 21.5 kDa<br>SDS-PAGE: 33.8 kDa   |
| <b>Purity</b>           | > 95% as analyzed by SDS-PAGE  |
| <b>Applications</b>     | ELISA and Western Blot Analysis  |

 Tel: 1-631-559-9269    1-516-512-3133

 Email: [info@creative-biomart.com](mailto:info@creative-biomart.com)     Fax: 1-631-938-8127

 45-1 Ramsey Road, Shirley, NY 11967, USA

|                       |   |
|-----------------------|---|
| <b>Notes</b>          | For Research Use Only.  |
| <b>Storage</b>        | 2 years at -20 to -80 centigrade as supplied.<br>1 month at 4 centigrade after reconstitution with preservative.<br>1 year at -20 to -80 centigrade after reconstitution. |
| <b>Storage Buffer</b> | Lyophilized from 1xPBS with Trelahose   |
| <b>Shipping</b>       | Ambient   |
| <b>Reconstitution</b> | Reconstitute at 25 µg/mL in sterile PBS containing at least 0.1% protein  |

## GENE INFORMATION

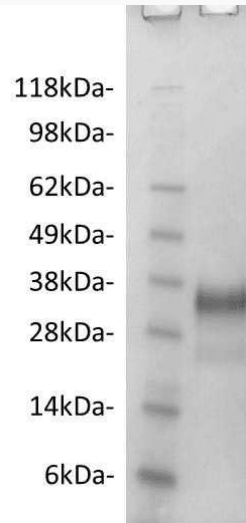
|                        |  |
|------------------------|--|
| <b>Gene Name</b>       | <a href="#">Ifng interferon gamma [ Cricetulus griseus (Chinese hamster) ]</a> |
| <b>Official Symbol</b> | <a href="#">Ifng</a>   |
| <b>Synonyms</b>        | Ifng; interferon gamma; interferon gamma                                       |
| <b>Gene ID</b>         | <a href="#">100768486</a>  |
| <b>mRNA Refseq</b>     | <a href="#">XM_035439009</a>   |
| <b>Protein Refseq</b>  | <a href="#">XP_035294900</a>   |
| <b>UniProt ID</b>      | <a href="#">O35497</a>   |

 Tel: 1-631-559-9269 1-516-512-3133

 Email: [info@creative-biomart.com](mailto:info@creative-biomart.com)  Fax: 1-631-938-8127

 45-1 Ramsey Road, Shirley, NY 11967, USA

**Hamster IFN $\gamma$  (2  $\mu$ g)  
on a Coomassie  
stained 4-12% SDS-  
PAGE gel, reducing  
conditions.**



 Tel: 1-631-559-9269 1-516-512-3133

 Email: [info@creative-biomart.com](mailto:info@creative-biomart.com)  Fax: 1-631-938-8127

 45-1 Ramsey Road, Shirley, NY 11967, USA