

## Recombinant Rat Ifn1 Protein, His-tagged

**Cat. No.** Ifn1-2771R    **Lot. No.** (See product label)

### SPECIFICATION

<b>Product Overview</b>	Recombinant Rat Ifn1 Protein (Thr25-Ala192) with N-His tag was expressed in 293F.
<b>Species</b>	Rat
<b>Source</b>	HEK293
<b>ProteinLength</b>	Thr25-Ala192
<b>Description</b>	Predicted to enable interleukin-28 receptor binding activity. Predicted to be involved in several processes, including defense response to other organism; negative regulation of immune response; and regulation of gene expression. Predicted to be located in extracellular region. Predicted to be part of interleukin-28 receptor complex. Predicted to be active in extracellular space. Human ortholog(s) of this gene implicated in several diseases, including COVID-19; cryoglobulinemia; dengue hemorrhagic fever; hepatitis C; and liver disease (multiple). Orthologous to human IFNL1 (interferon lambda 1); IFNL2 (interferon lambda 2); and IFNL3 (interferon lambda 3).
<b>Form</b>	Freeze-dried powder
<b>Molecular Mass</b>	Predicted Molecular Mass: 19.6 kDa Accurate Molecular Mass: \
<b>Purity</b>	> 90%
<b>Applications</b>	Positive Control; Immunogen; SDS-PAGE; WB.

 Tel: 1-631-559-9269    1-516-512-3133

 Email: [info@creative-biomart.com](mailto:info@creative-biomart.com)     Fax: 1-631-938-8127

 45-1 Ramsey Road, Shirley, NY 11967, USA

<b>Stability</b>	The thermal stability is described by the loss rate. The loss rate was determined by accelerated thermal degradation test, that is, incubate the protein at 37 centigrade for 48h, and no obvious degradation and precipitation were observed. The loss rate is less than 5% within the expiration date under appropriate storage condition.
<b>Storage</b>	Avoid repeated freeze/thaw cycles. Store at 2-8 centigrade for one month. Aliquot and store at -80 centigrade for 12 months.
<b>Storage Buffer</b>	PBS, pH7.4, containing 0.01% SKL, 1mM DTT, 5% Trehalose and Proclin300.
<b>Reconstitution</b>	Reconstitute in 10mM PBS (pH7.4) to a concentration of 0.1-1.0 mg/mL. Do not vortex.

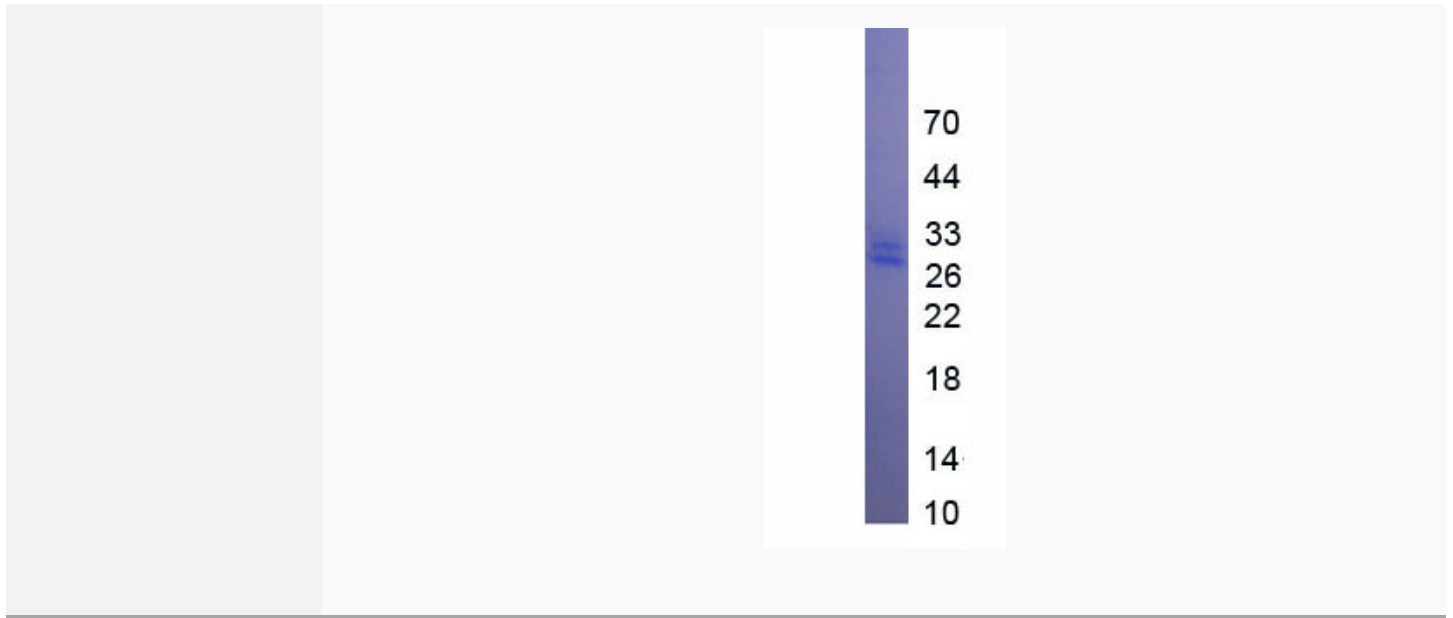
## GENE INFORMATION

<b>Gene Name</b>	<a href="#">Ifnl1 interferon, lambda 1 [ Rattus norvegicus (Norway rat) ]</a>
<b>Official Symbol</b>	<a href="#">Ifnl1</a>
<b>Synonyms</b>	Ifnl1; interferon, lambda 1; If1ia2; interferon lambda-2-like; interferon 1ia2; interleukin-28A-like
<b>Gene ID</b>	<a href="#">100911249</a>
<b>mRNA Refseq</b>	<a href="#">XM_008759287</a>
<b>Protein Refseq</b>	<a href="#">XP_008757509</a>
<b>UniProt ID</b>	<a href="#">A0A0G2JWM7</a>

 Tel: 1-631-559-9269 1-516-512-3133

 Email: [info@creative-biomart.com](mailto:info@creative-biomart.com)  Fax: 1-631-938-8127

 45-1 Ramsey Road, Shirley, NY 11967, USA



Tel: 1-631-559-9269 1-516-512-3133

Email: [info@creative-biomart.com](mailto:info@creative-biomart.com) Fax: 1-631-938-8127

45-1 Ramsey Road, Shirley, NY 11967, USA