

## Recombinant Bovine IgA Protein, His tagged

Cat. No. IgA-15B Lot. No. (See product label)

### SPECIFICATION

<b>Product Overview</b>	Recombinant Bovine IgA Protein with His tag was expressed in E. coli.
<b>Species</b>	Bovine
<b>Source</b>	E.coli
<b>Source</b>	E. coli
<b>Species</b>	Bovine
<b>Tag</b>	N-His
<b>Molecular Weight</b>	38 kDa
<b>AA Sequence</b>	MHHHHHHHHESETSPSIFPLSLGNNDPAGQVVIGCLVQGFFPSAPLSVTWNQNGDS VSVRNFPVAVLAGSLYTMSSQLTLPASLCPKGQSVTCQVQHLSKASKTVAVPCIIQDS SSCCVPNCEPSLSVQPPALEDLLLGSNASLTCTLSGLKSAEGASFTWNPTGGKTAV QGSPKRDSCGCYSVSSVLPGCADPWNSGQTFSCSVTHPESKSSLTATIKKDLGNTF RPQVHLLPPPSEELALNELVTLTCLVRGFSPKEVLVRWLQGNQELPREKYLTWGPL PEAGQSVTTFAVTSVLRVDAEVWKQGDTFSCMVGHEALPLAFTQKTIDRLAGKPTH VNVSVMSEVDGVCY
<b>Endotoxin</b>	< 1 EU/μg by LAL
<b>Purity</b>	> 90% by SDS-PAGE

 Tel: 1-631-559-9269 1-516-512-3133

 Email: [info@creative-biomart.com](mailto:info@creative-biomart.com)  Fax: 1-631-938-8127

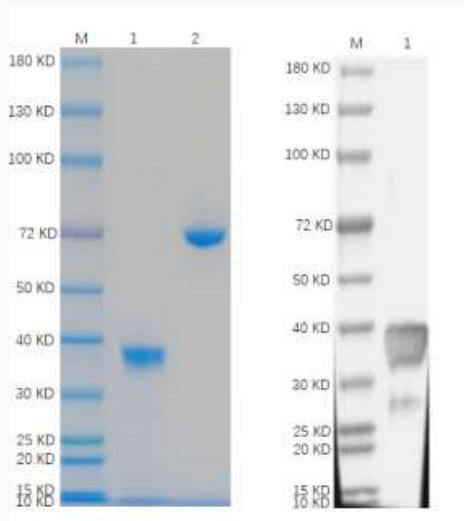
 45-1 Ramsey Road, Shirley, NY 11967, USA

<b>Storage</b>	Store it under sterile conditions at -20 to -80 centigrade. It is recommended that the protein be aliquoted for optimal storage. Avoid repeated freeze-thaw cycles.
<b>Storage Buffer</b>	Sterile 50mM Tris, pH8.0, 300mM NaCl, 20% Glycerol
<b>Concentration</b>	1.2 mg/mL by BCA

## GENE INFORMATION

<b>Official Symbol</b>	IgA
------------------------	-----

**Reducing 4%-20% SDS-PAGE (CBB stained) and WB (Anti-His Mouse Monoclonal antibody) analysis profiles of purified IgA.**



1. IgA: 1  $\mu$ g
2. BSA: 1  $\mu$ g

 Tel: 1-631-559-9269 1-516-512-3133

 Email: [info@creative-biomart.com](mailto:info@creative-biomart.com)  Fax: 1-631-938-8127

 45-1 Ramsey Road, Shirley, NY 11967, USA