

## Recombinant Pig IgA Protein, His-tagged

Cat. No. IgA-2273P Lot. No. (See product label)

### SPECIFICATION

<b>Product Overview</b>	Recombinant Pig IgA Protein (Ser1-Tyr341) with a N-His tag was expressed in E. coli.
<b>Species</b>	Pig
<b>Source</b>	E.coli
<b>ProteinLength</b>	Ser1-Tyr341
<b>Description</b>	Immunoglobulin is a protein of animal origin with known antibody activity. Immunoglobulins are major components of what is called the humoral immune response system. They are synthesized by lymphocytes and plasma cells and found in the serum and in other body fluids and tissues, including the urine, spinal fluid, lymph nodes, and spleen.
<b>Form</b>	Freeze-dried powder
<b>Molecular Mass</b>	Predicted Molecular Mass: 40.3 kDa Accurate Molecular Mass: 40 kDa
<b>Endotoxin</b>	<1.0 EU per 1g (determined by the LAL method).
<b>Purity</b>	> 90%
<b>Applications</b>	Positive Control; Immunogen; SDS-PAGE; WB.

 Tel: 1-631-559-9269 1-516-512-3133

 Email: [info@creative-biomart.com](mailto:info@creative-biomart.com)  Fax: 1-631-938-8127

 45-1 Ramsey Road, Shirley, NY 11967, USA

<b>Stability</b>	The thermal stability is described by the loss rate. The loss rate was determined by accelerated thermal degradation test, that is, incubate the protein at 37 centigrade for 48h, and no obvious degradation and precipitation were observed. The loss rate is less than 5% within the expiration date under appropriate storage condition.
<b>Storage</b>	Avoid repeated freeze/thaw cycles. Store at 2-8 centigrade for one month. Aliquot and store at -80 centigrade for 12 months.
<b>Storage Buffer</b>	100mM NaHCO <sub>3</sub> , 500mM NaCl, pH8.3, containing 1mM EDTA, 1mM DTT, 0.01% SKL, 5% Trehalose and Proclin300.
<b>Reconstitution</b>	Reconstitute in ddH <sub>2</sub> O to a concentration of 0.1-1.0 mg/mL. Do not vortex.

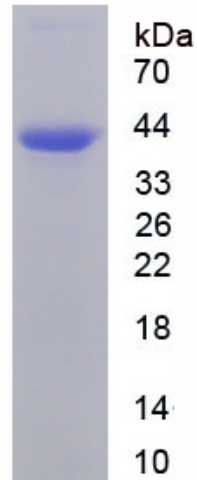
## GENE INFORMATION

<b>Gene Name</b>	IgA
<b>Official Symbol</b>	IgA
<b>Synonyms</b>	IgA heavy chain constant region; IGHA
<b>UniProt ID</b>	K7ZRK0

 Tel: 1-631-559-9269 1-516-512-3133

 Email: [info@creative-biomart.com](mailto:info@creative-biomart.com)  Fax: 1-631-938-8127

 45-1 Ramsey Road, Shirley, NY 11967, USA



Tel: 1-631-559-9269 1-516-512-3133

Email: [info@creative-biomart.com](mailto:info@creative-biomart.com) Fax: 1-631-938-8127

45-1 Ramsey Road, Shirley, NY 11967, USA