

## Recombinant Human IgE protein, His-Avi-tagged

Cat. No. IgE-1556H Lot. No. (See product label)

### SPECIFICATION

<b>Product Overview</b>	Recombinant Human IgE protein(P01854)(Cys209-Lys428), fused with C-terminal His and Avi tag, was expressed in HEK293.
<b>Species</b>	Human
<b>Source</b>	HEK293
<b>ProteinLength</b>	Cys209-Lys428
<b>Tag</b>	C-His-Avi
<b>Form</b>	Supplied as 0.22µm filtered solution in 20mM PB, 500mM NaCl, 10% glycerol (pH 7.4).
<b>Bio-activity</b>	Immobilized Human IgE, His Tag at 0.5µg/ml (100µl/well) on the plate. Dose response curve for Anti-IgE Antibody, hFc Tag with the EC50 of 7.0ng/ml determined by ELISA.
<b>Molecular Mass</b>	The protein has a predicted MW of 27.8 kDa. Due to glycosylation, the protein migrates to 30-35 kDa based on Tris-Bis PAGE result.
<b>Endotoxin</b>	Less than 1EU per µg by the LAL method.
<b>Purity</b>	> 95% as determined by Tris-Bis PAGE; > 95% as determined by HPLC.

 Tel: 1-631-559-9269 1-516-512-3133

 Email: [info@creative-biomart.com](mailto:info@creative-biomart.com)  Fax: 1-631-938-8127

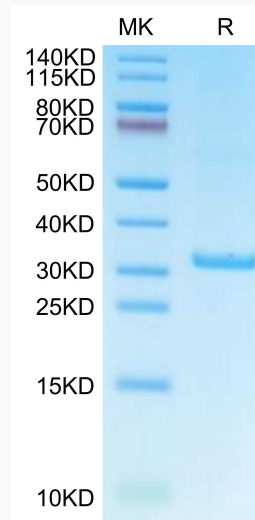
 45-1 Ramsey Road, Shirley, NY 11967, USA

**Storage**

Valid for 12 months from date of receipt when stored at -80°C.; Recommend to aliquot the protein into smaller quantities for optimal storage. Please do not repeated freeze-thaw cycles.

**Reconstitution**

It is recommended that sterile water be added to the vial to prepare a stock solution of 0.2 ug/ul. Centrifuge the vial at 4°C before opening to recover the entire contents.

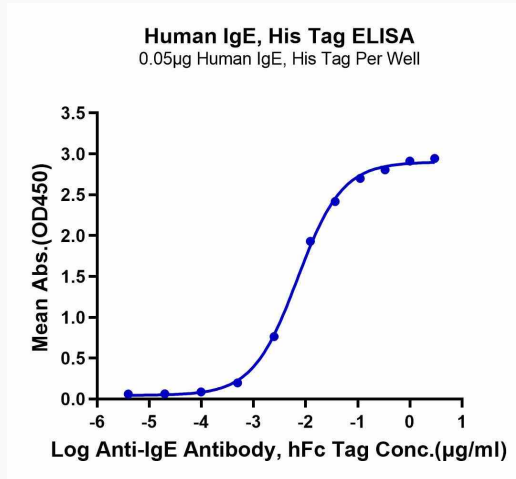
**Tris-Bis PAGE**

 Tel: 1-631-559-9269 1-516-512-3133

 Email: [info@creative-biomart.com](mailto:info@creative-biomart.com)  Fax: 1-631-938-8127

 45-1 Ramsey Road, Shirley, NY 11967, USA

ELISA



 Tel: 1-631-559-9269 1-516-512-3133

 Email: [info@creative-biomart.com](mailto:info@creative-biomart.com)  Fax: 1-631-938-8127

 45-1 Ramsey Road, Shirley, NY 11967, USA