

Recombinant Human IgE protein, His&Avi-tagged, Biotinylated

Cat. No. IgE-1556HB Lot. No. (See product label)

SPECIFICATION

Product Overview	Biotinylated Human IgE Protein(P01854-1)(Cys209-Lys428) is expressed from HEK293 with His and Avi tag at the C-Terminus.
Species	Human
Source	HEK293
ProteinLength	209-428 aa
Conjugation/Label	Biotin
Form	Lyophilized from 0.22 µm filtered solution in PBS (pH 7.4). Normally 8% trehalose is added as protectant before lyophilization.
Bio-activity	Immobilized Biotinylated Human IgE, His Tag at 0.5µg/ml (100µl/well) on the streptavidin precoated plate (5µg/ml). Dose response curve for Anti-IgE Antibody, hFc Tag with the EC50 of 5.0ng/ml determined by ELISA.
Molecular Mass	The protein has a predicted MW of 27.8 kDa. Due to glycosylation, the protein migrates to 32-38 kDa based on Bis-Tris PAGE result.
Endotoxin	Less than 1EU per µg by the LAL method.
Purity	> 95% as determined by Bis-Tris PAGE > 95% as determined by HPLC

 Tel: 1-631-559-9269 1-516-512-3133

 Email: info@creative-biomart.com  Fax: 1-631-938-8127

 45-1 Ramsey Road, Shirley, NY 11967, USA

Storage

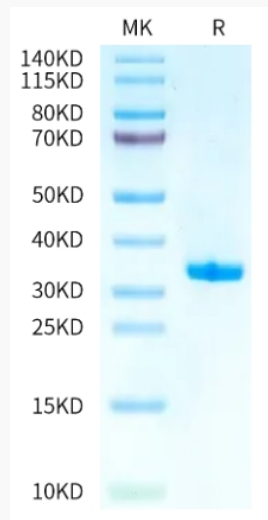
-20 to -80°C for 12 months as supplied from date of receipt. -80°C for 3 months after reconstitution. Recommend to aliquot the protein into smaller quantities for optimal storage. Please minimize freeze-thaw cycles.

Reconstitution

Centrifuge the tube before opening. Reconstituting to a concentration more than 100 µg/ml is recommended. Dissolve the lyophilized protein in distilled water.

Conjugation

Biotin

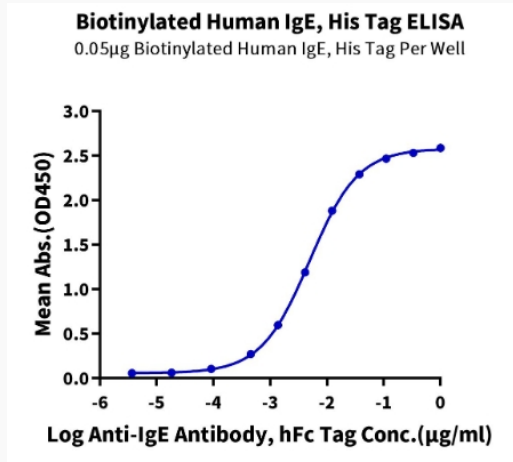
SDS-PAGE

 Tel: 1-631-559-9269 1-516-512-3133

 Email: info@creative-biomart.com  Fax: 1-631-938-8127

 45-1 Ramsey Road, Shirley, NY 11967, USA

ELISA



 Tel: 1-631-559-9269 1-516-512-3133

 Email: info@creative-biomart.com  Fax: 1-631-938-8127

 45-1 Ramsey Road, Shirley, NY 11967, USA