

Recombinant Mouse IgE Protein, His-tagged

Cat. No. IgE-2278M Lot. No. (See product label)

SPECIFICATION

Product Overview	Recombinant Mouse IgE Protein (Ser1-Ser421) with a N-His tag was expressed in E. coli.
Species	Mouse
Source	E.coli
ProteinLength	Ser1-Ser421
Description	Immunoglobulin is a protein of animal origin with known antibody activity. Immunoglobulins are major components of what is called the humoral immune response system. They are synthesized by lymphocytes and plasma cells and found in the serum and in other body fluids and tissues, including the urine, spinal fluid, lymph nodes, and spleen.
Form	Freeze-dried powder
Molecular Mass	Predicted Molecular Mass: 51.0 kDa Accurate Molecular Mass: 51 kDa
Endotoxin	<1.0 EU per 1g (determined by the LAL method).
Purity	> 90%
Applications	Positive Control; Immunogen; SDS-PAGE; WB.

 Tel: 1-631-559-9269 1-516-512-3133

 Email: info@creative-biomart.com  Fax: 1-631-938-8127

 45-1 Ramsey Road, Shirley, NY 11967, USA

Stability	The thermal stability is described by the loss rate. The loss rate was determined by accelerated thermal degradation test, that is, incubate the protein at 37 centigrade for 48h, and no obvious degradation and precipitation were observed. The loss rate is less than 5% within the expiration date under appropriate storage condition.
Storage	Avoid repeated freeze/thaw cycles. Store at 2-8 centigrade for one month. Aliquot and store at -80 centigrade for 12 months.
Storage Buffer	20mM Tris, 150mM NaCl, pH8.0, containing 1mM EDTA, 1mM DTT, 0.01% SKL, 5% Trehalose and Proclin300.
Reconstitution	Reconstitute in 20mM Tris, 150mM NaCl (pH8.0) to a concentration of 0.1-1.0 mg/mL. Do not vortex.

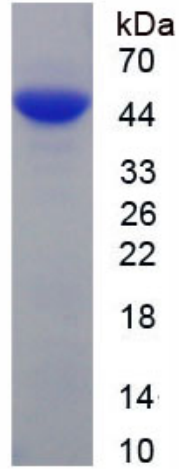
GENE INFORMATION

Gene Name	IgE
Official Symbol	IgE
Synonyms	IgE heavy chain constant region; IGHE
UniProt ID	P06336

 Tel: 1-631-559-9269 1-516-512-3133

 Email: info@creative-biomart.com  Fax: 1-631-938-8127

 45-1 Ramsey Road, Shirley, NY 11967, USA



Tel: 1-631-559-9269 1-516-512-3133

Email: info@creative-biomart.com Fax: 1-631-938-8127

45-1 Ramsey Road, Shirley, NY 11967, USA