

Active Recombinant Cynomolgus IgE protein, His & Avi tagged

Cat. No. IgE-909C Lot. No. (See product label)

SPECIFICATION

Product Overview	Recombinant Cynomolgus IgE protein(G8F4W7)(Lys208-Lys429), fused with C-terminal His tag and Avi tag, was expressed in HEK293.
Species	Cynomolgus
Source	HEK293
ProteinLength	Lys208-Lys429
Form	Lyophilized from 0.22um filtered solution in PBS (pH 7.4). Normally 8% trehalose is added as protectant before lyophilization.
Bio-activity	Immobilized Cynomolgus IgE, His Tag at 1ug/ml (100ul/well) on the plate. Dose response curve for Anti-IgE Antibody, hFc Tag with the EC50 of 9.3ng/ml determined by ELISA. See testing image for detail.
Molecular Mass	The protein has a predicted MW of 27.9 kDa. Due to glycosylation, the protein migrates to 35-40 kDa based on Tris-Bis PAGE result.
Endotoxin	Less than 1EU per ug by the LAL method.
Purity	> 95% as determined by Tris-Bis PAGE;> 95% as determined by HPLC
Storage	Reconstituted protein stable at -80°C for 12 months, 4°C for 1 week. Use a manual defrost freezer and avoid repeated freeze-thaw cycles.

 Tel: 1-631-559-9269 1-516-512-3133

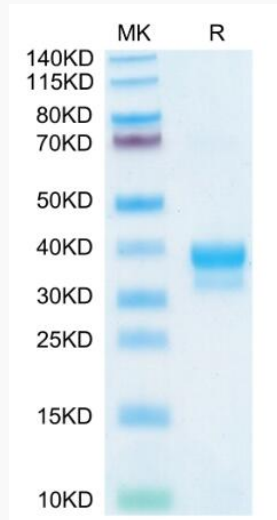
 Email: info@creative-biomart.com  Fax: 1-631-938-8127

 45-1 Ramsey Road, Shirley, NY 11967, USA

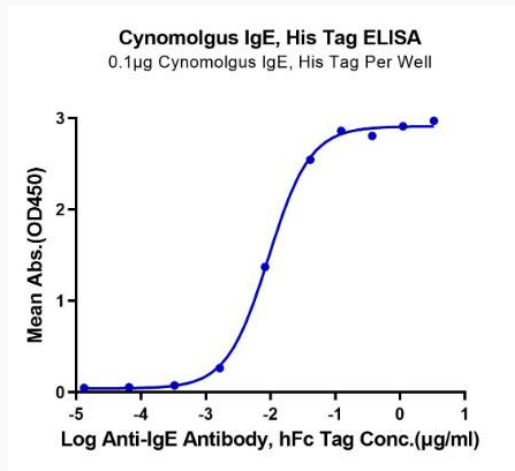
Reconstitution

It is recommended that sterile water be added to the vial to prepare a stock solution of 0.2 ug/ul. Centrifuge the vial at 4°C before opening to recover the entire contents.

SDS-PAGE



Activity



Tel: 1-631-559-9269 1-516-512-3133

Email: info@creative-biomart.com Fax: 1-631-938-8127

45-1 Ramsey Road, Shirley, NY 11967, USA