

Native Goat Whole Molecule IgG, Biotin-LC-NHS Conjugated

Cat. No. IgG-007G **Lot. No.** (See product label)

SPECIFICATION

Species	Goat
Description	Immunoglobulin G(IgG) is an antibody isotype. It is a protein complex composed of four peptide chains—two identical heavy chains and two identical light chains arranged in a Y-shape typical of antibody monomers. Each IgG has two antigen binding sites. Representing approximately 75% of serum immunoglobulins in humans, IgG is the most abundant antibody isotype found in the circulation. IgG molecules are synthesized and secreted by plasma B cells.
Conjugation/Label	Biotin-NHS-LC
Form	Liquid
Purification	Purified
Purity	> 95% based on SDS-PAGE
Applications	Western Blot; ELISA; Immunohistochemistry (IHC)
Notes	For in vitro Laboratory Use Only. Not for diagnostic or therapeutic use. Not for human or animal consumption.
Storage	2-8 centigrade
Storage Buffer	10 mM Sodium Phosphate, 0.15 M Sodium Chloride, pH 7.2, 1 % (w/v) BSA,

 Tel: 1-631-559-9269 1-516-512-3133

 Email: info@creative-biomart.com  Fax: 1-631-938-8127

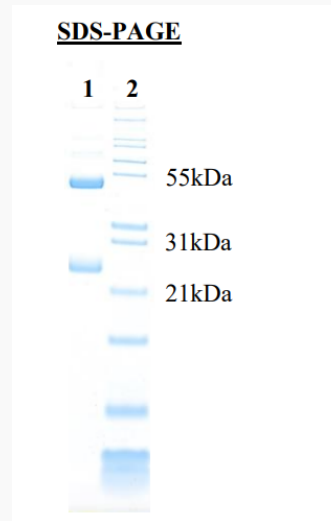
 45-1 Ramsey Road, Shirley, NY 11967, USA

Protease/IgG free

Preservative 0.05% (w/v) Sodium Azide

Concentration 1.5 mg/mL

SDS-PAGE



1) IgG
2) Mol Weight Standard

 Tel: 1-631-559-9269 1-516-512-3133

 Email: info@creative-biomart.com  Fax: 1-631-938-8127

 45-1 Ramsey Road, Shirley, NY 11967, USA