

## Native Rabbit IgG Fab fragment

Cat. No. IgG-147R Lot. No. (See product label)

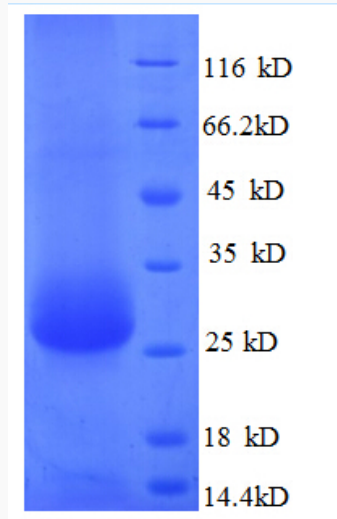
### SPECIFICATION


<b>Species</b>	Rabbit
<b>Source</b>	Rabbit Serum
<b>ProteinLength</b>	Full length native Rabbit IgG Fab fragment
<b>Description</b>	The fragment antigen-binding (Fab fragment) is a region on an antibody that binds to antigens. It is composed of one constant and one variable domain of each of the heavy and the light chain. These domains shape the paratope — the antigen-binding site — at the amino terminal end of the monomer. The two variable domains bind the epitope on their specific antigens.
<b>Form</b>	Liquid
<b>Purity</b>	>95% (SDS-PAGE)
<b>Applications</b>	Western blotting, ELISA, etc
<b>Storage</b>	Aliquot and store at -20°C or -80°C. Avoid repeated freeze / thaw cycles.
<b>Storage Buffer</b>	PBS pH 7.4

 Tel: 1-631-559-9269 1-516-512-3133


 Email: [info@creative-biomart.com](mailto:info@creative-biomart.com)  Fax: 1-631-938-8127

 45-1 Ramsey Road, Shirley, NY 11967, USA



 Tel: 1-631-559-9269 1-516-512-3133

 Email: [info@creative-biomart.com](mailto:info@creative-biomart.com)  Fax: 1-631-938-8127

 45-1 Ramsey Road, Shirley, NY 11967, USA