

Native Mouse IgG Fab fragment

Cat. No. IgG-151M Lot. No. (See product label)

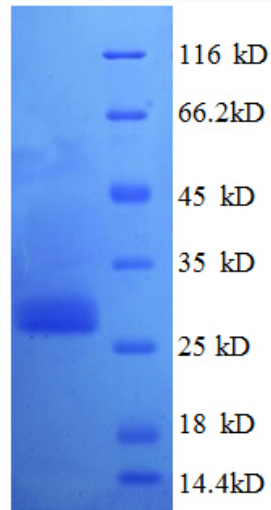
SPECIFICATION

Species	Mouse
Source	Mouse Serum
Description	The fragment antigen-binding (Fab fragment) is a region on an antibody that binds to antigens. It is composed of one constant and one variable domain of each of the heavy and the light chain. These domains shape the paratope — the antigen-binding site — at the amino terminal end of the monomer. The two variable domains bind the epitope on their specific antigens.
Form	Liquid
Purity	>95% (SDS-PAGE)
Applications	WB,ELISA
Storage	Aliquot and store at -20°C or -80°C. Avoid repeated freeze / thaw cycles.
Storage Buffer	PBS

 Tel: 1-631-559-9269 1-516-512-3133

 Email: info@creative-biomart.com  Fax: 1-631-938-8127

 45-1 Ramsey Road, Shirley, NY 11967, USA



Tel: 1-631-559-9269 1-516-512-3133

Email: info@creative-biomart.com Fax: 1-631-938-8127

45-1 Ramsey Road, Shirley, NY 11967, USA