

## Native Rat IgG Fc fragment

Cat. No. IgG-166R Lot. No. (See product label)

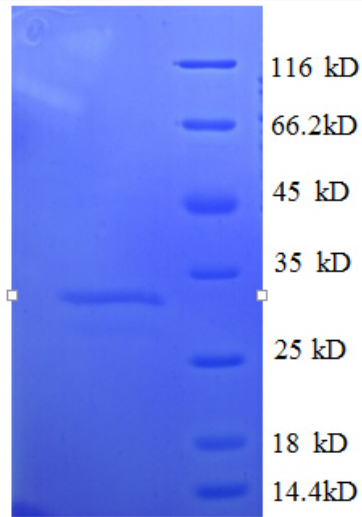
### SPECIFICATION


<b>Species</b>	Rat
<b>Source</b>	Rat Serum
<b>Description</b>	<p>The fragment crystallizable region (Fc region) is the tail region of an antibody that interacts with cell surface receptors called Fc receptors and some proteins of the complement system. This property allows antibodies to activate the immune system. In IgG, IgA and IgD antibody isotypes, the Fc region is composed of two identical protein fragments, derived from the second and third constant domains of the antibody's two heavy chains; IgM and IgE Fc regions contain three heavy chain constant domains (CH domains 2).</p>
<b>Form</b>	Liquid
<b>Purity</b>	>95% (SDS-PAGE)
<b>Applications</b>	Western blotting, ELISA
<b>Storage</b>	Aliquot and store at -20°C or -80°C. Avoid repeated freeze / thaw cycles.
<b>Storage Buffer</b>	PBS

 Tel: 1-631-559-9269 1-516-512-3133


 Email: [info@creative-biomart.com](mailto:info@creative-biomart.com)  Fax: 1-631-938-8127

 45-1 Ramsey Road, Shirley, NY 11967, USA



 Tel: 1-631-559-9269 1-516-512-3133

 Email: [info@creative-biomart.com](mailto:info@creative-biomart.com)  Fax: 1-631-938-8127

 45-1 Ramsey Road, Shirley, NY 11967, USA