

Native Goat IgG Fc fragment

Cat. No. IgG-170G Lot. No. (See product label)

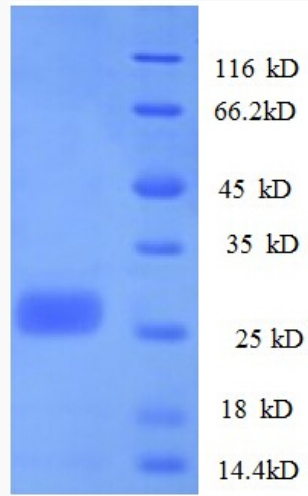
SPECIFICATION

Species	Goat
Source	Goat Serum
Description	<p>The fragment crystallizable region (Fc region) is the tail region of an antibody that interacts with cell surface receptors called Fc receptors and some proteins of the complement system. This property allows antibodies to activate the immune system. In IgG, IgA and IgD antibody isotypes, the Fc region is composed of two identical protein fragments, derived from the second and third constant domains of the antibody's two heavy chains; IgM and IgE Fc regions contain three heavy chain constant domains (CH domains 2).</p>
Form	Liquid
Purity	>95% (SDS-PAGE)
Applications	Western blotting, ELISA, etc.
Storage	Aliquot and store at -20°C or -80°C. Avoid repeated freeze / thaw cycles.
Storage Buffer	PBS

 Tel: 1-631-559-9269 1-516-512-3133

 Email: info@creative-biomart.com  Fax: 1-631-938-8127

 45-1 Ramsey Road, Shirley, NY 11967, USA



Tel: 1-631-559-9269 1-516-512-3133

Email: info@creative-biomart.com Fax: 1-631-938-8127

45-1 Ramsey Road, Shirley, NY 11967, USA