

## Active Recombinant Human IgG1 protein, His-tagged

Cat. No. IgG1-1271H Lot. No. (See product label)

### SPECIFICATION

<b>Product Overview</b>	Recombinant Human IgG1 Protein is produced by HEK293 cells expression system. The target protein is expressed with sequence (Pro100-Lys330) of human IgG1 Fc fused with a 6xHis tag at the C-terminus.
<b>Species</b>	Human
<b>Source</b>	HEK293
<b>ProteinLength</b>	Pro100-Lys330
<b>Form</b>	Lyophilized from a 0.22 µm filtered solution of PBS, pH 7.4.
<b>Bio-activity</b>	Measured by its binding ability in a functional ELISA. Immobilized Human Fc-gamma RII-a(CD32a) at 1 µg/mL (100 µL/well) can bind IgG1 Fc with a linear range of 0.156-3.47 µg/mL.
<b>Molecular Mass</b>	37kDa
<b>Endotoxin</b>	<0.1EU/ug
<b>Purity</b>	> 95% by SDS-PAGE.
<b>Storage</b>	Store the lyophilized protein at -20°C to -80°C for 12 months. After reconstitution, the protein solution is stable at -20°C for 3 months, at 2-8°C for up to 1 week.

 Tel: 1-631-559-9269 1-516-512-3133

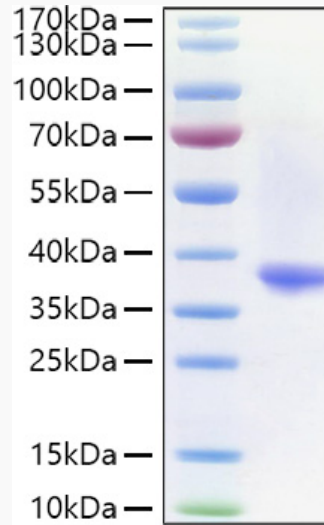
 Email: [info@creative-biomart.com](mailto:info@creative-biomart.com)  Fax: 1-631-938-8127

 45-1 Ramsey Road, Shirley, NY 11967, USA

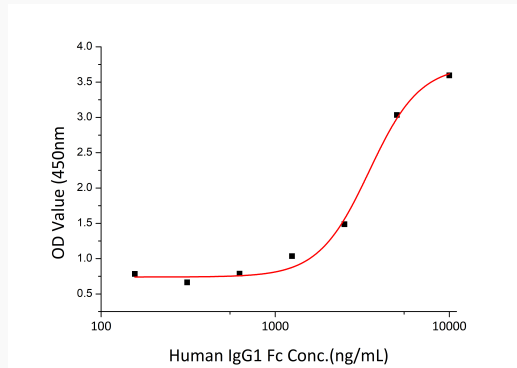
**Reconstitution**

Reconstitute to a concentration of 0.1-0.5 mg/mL in sterile distilled water.

**SDS-PAGE**



**Activity**



 Tel: 1-631-559-9269 1-516-512-3133

 Email: [info@creative-biomart.com](mailto:info@creative-biomart.com)  Fax: 1-631-938-8127

 45-1 Ramsey Road, Shirley, NY 11967, USA