

Recombinant Human IgG1 Protein, His-tagged

Cat. No. IgG1-2691H Lot. No. (See product label)

SPECIFICATION

Product Overview	Recombinant Human IgG1 Protein (Gln20-Lys117) with N-His tag was expressed in E. coli.
Species	Human
Source	E.coli
ProteinLength	Gln20-Lys117
Description	Immunoglobulins, also known as antibodies, are glycoprotein molecules produced by plasma cells (white blood cells).
Form	Freeze-dried powder
Molecular Mass	Predicted Molecular Mass: 14.5 kDa Accurate Molecular Mass: 15 kDa
Purity	> 90%
Applications	Positive Control; Immunogen; SDS-PAGE; WB.
Stability	The thermal stability is described by the loss rate. The loss rate was determined by accelerated thermal degradation test, that is, incubate the protein at 37 centigrade for 48h, and no obvious degradation and precipitation were observed. The loss rate is less than 5% within the expiration date under appropriate storage condition.

 Tel: 1-631-559-9269 1-516-512-3133

 Email: info@creative-biomart.com  Fax: 1-631-938-8127

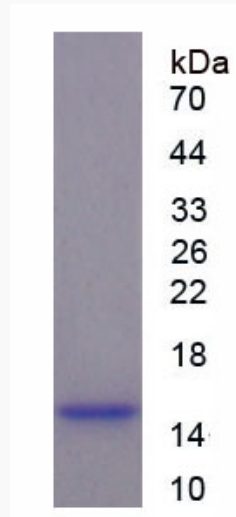
 45-1 Ramsey Road, Shirley, NY 11967, USA

Storage	Avoid repeated freeze/thaw cycles. Store at 2-8 centigrade for one month. Aliquot and store at -80 centigrade for 12 months.
Storage Buffer	20mM Tris, 150mM NaCl, pH8.0, containing 1mM EDTA, 1mM DTT, 0.01% SKL, 5% Trehalose and Proclin300.
Reconstitution	Reconstitute in 20mM Tris, 150mM NaCl (pH8.0) to a concentration of 0.1-1.0 mg/mL. Do not vortex.

GENE INFORMATION

Official Symbol [IgG1](#)

Synonyms IGHG1; Ig Gamma-1 Chain C Region; Immunoglobulin Heavy Constant Gamma 1; G1m Marker; Immunoglobulin Gm1



 Tel: 1-631-559-9269 1-516-512-3133

 Email: info@creative-biomart.com  Fax: 1-631-938-8127

 45-1 Ramsey Road, Shirley, NY 11967, USA