

# Active Recombinant Human IgG1 Fc Chimera Protein, Alexa Fluor 647-Labeled

**Cat. No.** IgG1-66H    **Lot. No.** (See product label)

## SPECIFICATION

**Product Overview**      Recombinant human IgG1 (Pro100-Lys330, Leu117Ala, Leu118Glu, Gly120Ala, Thr276Ala) Fc Chimera Alexa Fluor 647 Protein was expressed in Mouse myeloma cell line.

**Species**                      Human

**Source**                        NS0

**ProteinLength**              100-330 a.a.

**Description**                Constant region of immunoglobulin heavy chains. Immunoglobulins, also known as antibodies, are membrane-bound or secreted glycoproteins produced by B lymphocytes. In the recognition phase of humoral immunity, the membrane-bound immunoglobulins serve as receptors which, upon binding of a specific antigen, trigger the clonal expansion and differentiation of B lymphocytes into immunoglobulin-secreting plasma cells. Secreted immunoglobulins mediate the effector phase of humoral immunity, which results in the elimination of bound antigens. The antigen binding site is formed by the variable domain of one heavy chain, together with that of its associated light chain. Thus, each immunoglobulin has two antigen binding sites with remarkable affinity for a particular antigen. The variable domains are assembled by a process called V-(D)-J rearrangement and can then be subjected to somatic hypermutations which, after exposure to antigen and selection, allow affinity maturation for a particular antigen. Mediates IgG effector functions on monocytes

 Tel: 1-631-559-9269    1-516-512-3133

 Email: [info@creative-biomart.com](mailto:info@creative-biomart.com)     Fax: 1-631-938-8127

 45-1 Ramsey Road, Shirley, NY 11967, USA

	triggering ADCC of virus-infected cells
<b>Form</b>	Disulfide linked homodimer Labeled with Alexa Fluor 647 Excitation Wavelength: 650 nm Emission Wavelength: 668 nm
<b>Bio-activity</b>	Measured by flow cytometry for its ability to bind anti-human IgG1 Fc Antibody conjugated beads. The concentration of Recombinant Human IgG1Fc Chimera Alexa Fluor 647 that produces 50% of the binding response is 0.200-2.00 ng/mL.
<b>Molecular Mass</b>	Predicted Molecular Mass: 26.6 kDa SDS-PAGE: 30-40 kDa, under reducing conditions.
<b>N-terminal Sequence Analysis</b>	Ile
<b>Endotoxin</b>	<1.0 EU/μg of the protein by the LAL method.
<b>Purity</b>	>95%, by SDS-PAGE visualized with Silver Staining and quantitative densitometry by Coomassie Blue Staining.
<b>Storage</b>	Protect from light. Use a manual defrost freezer and avoid repeated freeze-thaw cycles. 6 months from date of receipt, -20 to -70 centigrade as supplied. 1 month, 2 to 8 centigrade under sterile conditions after opening. 3 months, -20 to -70 centigrade under sterile conditions after opening.
<b>Storage Buffer</b>	Supplied as a 0.2 μm filtered solution in PBS with BSA as a carrier protein.
<b>Shipping</b>	The product is shipped with dry ice or equivalent.

 Tel: 1-631-559-9269 1-516-512-3133

 Email: [info@creative-biomart.com](mailto:info@creative-biomart.com)  Fax: 1-631-938-8127

 45-1 Ramsey Road, Shirley, NY 11967, USA

**Conjugation** Alexa Fluor 647

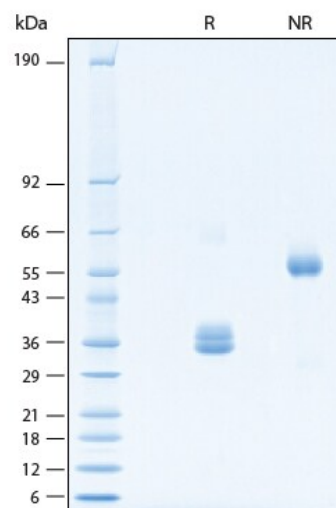
## GENE INFORMATION

**Official Symbol** IgG1

**Synonyms** Immunoglobulin G1; IgG1; Igh-4; RGD1359539; VH7183

**UniProt ID** [P01857](#)

## SDS-PAGE



2 µg/lane of Recombinant Human IgG1 Fc Chimera Alexa Fluor 647 Protein was resolved with SDS-PAGE under reducing (R) and non-reducing (NR) conditions and visualized by Coomassie Blue staining, showing bands at 30-35 kDa and 60-70 kDa, respectively.

 Tel: 1-631-559-9269 1-516-512-3133

 Email: [info@creative-biomart.com](mailto:info@creative-biomart.com)  Fax: 1-631-938-8127

 45-1 Ramsey Road, Shirley, NY 11967, USA