

Active GMP Recombinant Mouse Igf1 Protein, His-Tagged

Cat. No. Igf1-01M Lot. No. (See product label)

SPECIFICATION

Product Overview	GMP Recombinant Mouse Igf1 Protein, His-Tagged was expressed in Escherichia coli cell-derived in an animal component free process under cGMP guidelines.
Species	Mouse
Source	E.coli
Description	This gene encodes a member of the insulin-like growth factor (IGF) family of proteins that promote growth and development during fetal and postnatal life. This gene is predominantly expressed in the liver and the encoded protein undergoes proteolytic processing to generate a disulfide-linked mature polypeptide. Transgenic disruption of this gene in mice results in reduced postnatal survival and severe growth retardation. Mice lacking the encoded protein exhibit generalized organ hypoplasia including underdevelopment of the central nervous system and developmental defects in bone, muscle and reproductive systems. Alternative splicing results in multiple transcript variants encoding different isoforms that may undergo similar processing to generate mature protein.
Form	Lyophilized
Bio-activity	Measure by its ability to induce MCF-7 cells proliferation. The ED50 for this effect is <2 ng/mL. The specific activity of recombinant mouse IGF-I is > 5 x 10 ⁵ IU/mg.
AA Sequence	MGPETLCGAELVDALQFVCGPRGFYFNKPTGYGSSIRRAPQTGIVDECCFRSCDLR RLEMYCAPLKPTKAA with polyhistidine tag at the C-terminus

 Tel: 1-631-559-9269 1-516-512-3133

 Email: info@creative-biomart.com  Fax: 1-631-938-8127

 45-1 Ramsey Road, Shirley, NY 11967, USA

Endotoxin	<0.1 EU per 1 µg of the protein by the LAL method.
Purity	>98% as determined by SDS-PAGE analysis. Purified by Ni-NTA chromatography.
Notes	Please use within one month after protein reconstitution.
Storage	Lyophilized protein should be stored at -20°C. Upon reconstitution, protein aliquots should be stored at -20°C or -80°C.
Storage Buffer	The protein was lyophilized from a solution containing 1X PBS, pH 8.0.
Reconstitution	It is recommended to reconstitute the lyophilized protein in sterile H ₂ O to a concentration not less than 100 µg/mL and incubate the stock solution for at least 20 min to ensure sufficient re-dissolved.

GENE INFORMATION

Gene Name	lgf1 insulin-like growth factor 1 [Mus musculus (house mouse)]
Official Symbol	lgf1
Synonyms	lgf-1; Igf-I; C730016P09Rik
Gene ID	16000
mRNA Refseq	NM_001111274.1
Protein Refseq	NP_001104744.1
UniProt ID	E9PU89

 Tel: 1-631-559-9269 1-516-512-3133

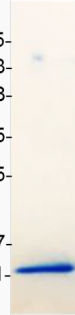
 Email: info@creative-biomart.com  Fax: 1-631-938-8127

 45-1 Ramsey Road, Shirley, NY 11967, USA



kDa

75-
63-
48-
35-
25-
17-
11-



Tel: 1-631-559-9269 1-516-512-3133

Email: info@creative-biomart.com Fax: 1-631-938-8127

45-1 Ramsey Road, Shirley, NY 11967, USA