

Active Recombinant Mouse Igf1 protein, His-tagged

Cat. No. Igf1-811M Lot. No. (See product label)

SPECIFICATION

Product Overview	Active Recombinant Mouse Igf1 protein(Q8CAR0)(33~102 aa), fused with N-terminal His tag, was expressed in E.coli.
Species	Mouse
Source	E.coli
ProteinLength	33-102 aa
Form	Lyophilized from sterile 20mM Tris, 150mM NaCl, pH8.0, containing 1mM EDTA, 1mM DTT, 0.01% SKL, 5% Trehalose and Proclin300.
Bio-activity	<p>Insulin-like growth factor 1 (IGF1), also called somatomedin C is a hormone similar in molecular structure to insulin. It plays an important role in childhood growth and continues to have anabolic effects in adults. A synthetic analog of IGF1, mecasermin, is used for the treatment of growth failure. Besides, Insulin Like Growth Factor Binding Protein 3 (IGFBP3) has been identified as an interactor of IGF1, thus a binding ELISA assay was conducted to detect the interaction of recombinant mouse IGF1 and recombinant mouse IGFBP3. Briefly, IGF1 were diluted serially in PBS, with 0.01% BSA (pH 7.4). Duplicate samples of 100µL were then transferred to IGFBP3-coated microtiter wells and incubated for 2h at 37°C. Wells were washed with PBST and incubated for 1h with anti-IGF1 pAb, then aspirated and washed 3 times. After incubation with HRP labelled secondary antibody, wells were aspirated and washed 3 times. With the addition of substrate solution, wells were incubated 15-25 minutes at</p>

 Tel: 1-631-559-9269 1-516-512-3133

 Email: info@creative-biomart.com  Fax: 1-631-938-8127

 45-1 Ramsey Road, Shirley, NY 11967, USA



37°C. Finally, add 50µ stop solution to the wells and read at 450nm immediately. The binding activity of IGF1 and IGFBP3 was shown, and this effect was in a dose dependent manner.

Molecular Mass 8.8kDa

Endotoxin <1.0EU per 1µg (determined by the LAL method).

Purity > 90% as determined by SDS-PAGE.

Storage Avoid repeated freeze/thaw cycles. Store at -20°C for 12 months. Aliquot and store at -80°C for 12 months.

Reconstitution Reconstitute in 20mM Tris, 150mM NaCl (pH8.0) to a concentration of 0.1-1.0 mg/mL. Do not vortex.

GENE INFORMATION

Gene Name [lgf1 insulin-like growth factor 1 \[Mus musculus \]](#)

Official Symbol [lgf1](#)

Synonyms IGF1; insulin-like growth factor 1; insulin-like growth factor I; somatomedin; Igf-1; Igf-I; C730016P09Rik;

Gene ID [16000](#)

mRNA Refseq [NM_001111274](#)

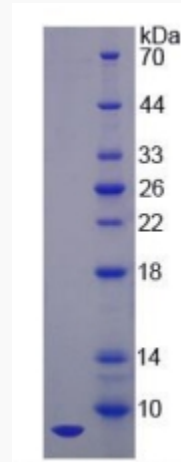
Protein Refseq [NP_001104744](#)

Tel: 1-631-559-9269 1-516-512-3133

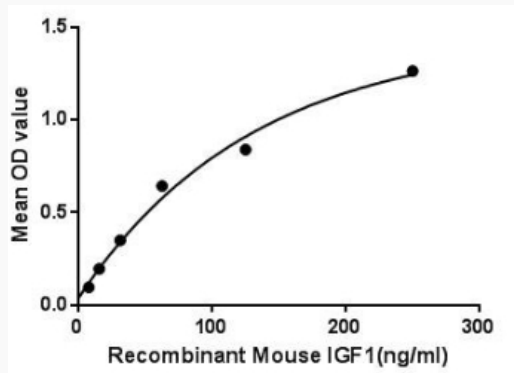
Email: info@creative-biomart.com Fax: 1-631-938-8127

45-1 Ramsey Road, Shirley, NY 11967, USA

SDS-PAGE



Activity



 Tel: 1-631-559-9269 1-516-512-3133

 Email: info@creative-biomart.com  Fax: 1-631-938-8127

 45-1 Ramsey Road, Shirley, NY 11967, USA