

Recombinant Mouse Igf1 protein, His & T7-tagged

Cat. No. Igf1-812M Lot. No. (See product label)

SPECIFICATION

Product Overview	Recombinant Mouse Igf1 aa. (Gly49~Met153 (Accession # P05017)) fused with N-terminal His & T7 tag was produced in E. coli cells.
Species	Mouse
Source	E.coli
ProteinLength	Gly49~Met153
Form	Freeze-dried powder
Molecular Mass	Predicted Molecular Mass: 15.6kDa
Endotoxin	<1.0EU per 1g (determined by the LAL method)
Purity	> 95%
Characteristic	The isoelectric point is 9.7.
Applications	SDS-PAGE; WB; ELISA; IP
Stability	The thermal stability is described by the loss rate. The loss rate was determined by accelerated thermal degradation test, that is, incubate the protein at 37°C for 48h, and no obvious degradation and precipitation were observed. The loss rate is less than 5% within the expiration date under appropriate storage condition.

 Tel: 1-631-559-9269 1-516-512-3133

 Email: info@creative-biomart.com  Fax: 1-631-938-8127

 45-1 Ramsey Road, Shirley, NY 11967, USA

Storage	Avoid repeated freeze/thaw cycles. Store at 2-8°C for one month. Aliquot and store at -80°C for 12 months.
Storage buffer	Supplied as lyophilized form in PBS, pH7.4, containing 5% trehalose, 0.01% sarcosyl
Reconstitution	Reconstitute in sterile PBS, pH7.2-pH7.4

GENE INFORMATION

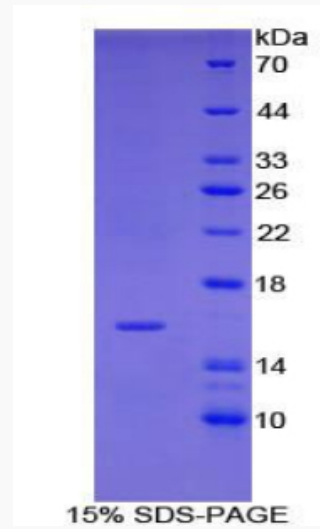
Gene Name	lgf1 insulin-like growth factor 1 [<i>Mus musculus</i> (house mouse)]
Official Symbol	lgf1
Synonyms	lgf1; insulin-like growth factor 1; Igf-1; Igf-I; C730016P09Rik; insulin-like growth factor I; somatomedin
Gene ID	16000
mRNA Refseq	NM_001111275.2
Protein Refseq	NP_001104745.1
UniProt ID	P05017

 Tel: 1-631-559-9269 1-516-512-3133

 Email: info@creative-biomart.com  Fax: 1-631-938-8127

 45-1 Ramsey Road, Shirley, NY 11967, USA

SDS-PAGE



 Tel: 1-631-559-9269 1-516-512-3133

 Email: info@creative-biomart.com  Fax: 1-631-938-8127

 45-1 Ramsey Road, Shirley, NY 11967, USA