

Recombinant Rat Igf1 protein, His & GST-tagged

Cat. No. Igf1-814R Lot. No. (See product label)

SPECIFICATION

Product Overview	Recombinant Rat Igf1 aa. (Gly23~Ala92 (Accession # P08025)) fused with N-terminal His & GST tag was produced in E. coli cells.
Species	Rat
Source	E.coli
ProteinLength	Gly23~Ala92
Description	Growth factor; plays a major role in mammalian growth.
Form	Freeze-dried powder
Molecular Mass	Predicted Molecular Mass: 40.1kDa
Endotoxin	<1.0EU per 1g (determined by the LAL method)
Purity	> 95%
Characteristic	The isoelectric point is 6.7.
Applications	SDS-PAGE; WB; ELISA; IP
Stability	The thermal stability is described by the loss rate. The loss rate was determined by accelerated thermal degradation test, that is, incubate the protein at 37°C for 48h,

 Tel: 1-631-559-9269 1-516-512-3133

 Email: info@creative-biomart.com  Fax: 1-631-938-8127

 45-1 Ramsey Road, Shirley, NY 11967, USA

and no obvious degradation and precipitation were observed. The loss rate is less than 5% within the expiration date under appropriate storage condition.

Storage

Avoid repeated freeze/thaw cycles. Store at 2-8°C for one month. Aliquot and store at -80°C for 12 months.

Storage buffer

Supplied as lyophilized form in PBS, pH7.4, containing 5% trehalose, 0.01% sarcosyl

Reconstitution

Reconstitute in sterile PBS, pH7.2-pH7.4

GENE INFORMATION

Gene Name

Igf1 insulin-like growth factor 1 [*Rattus norvegicus* (Norway rat)]

Official Symbol

Igf1

Synonyms

Igf1; insulin-like growth factor 1; IGF; IGF-I; somatomedin

Gene ID

24482

mRNA Refseq

NM_001082477.2

Protein Refseq

NP_001075946.2

UniProt ID

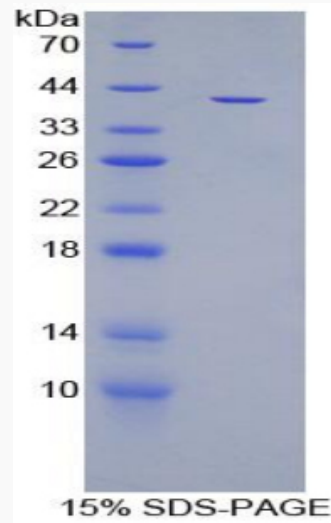
P08025

 Tel: 1-631-559-9269 1-516-512-3133

 Email: info@creative-biomart.com  Fax: 1-631-938-8127

 45-1 Ramsey Road, Shirley, NY 11967, USA

SDS-PAGE



 Tel: 1-631-559-9269 1-516-512-3133

 Email: info@creative-biomart.com  Fax: 1-631-938-8127

 45-1 Ramsey Road, Shirley, NY 11967, USA