

Recombinant Rat Igf2r protein, His & T7-tagged

Cat. No. Igf2r-1729R **Lot. No.** (See product label)

SPECIFICATION

Product Overview	Recombinant Rat Igf2r aa. (Val1146~Gln1363 (Accession # G3V824)) fused with N-terminal His & T7 tag was produced in E. coli cells.
Species	Rat
Source	E.coli
ProteinLength	Val1146~Gln1363
Description	Mediates internalization of insulin-like growth factor II; plays a role in lysosomal enzyme transport.
Form	Freeze-dried powder
Molecular Mass	Predicted Molecular Mass: 28.4kDa
Endotoxin	<1.0EU per 1ug (determined by the LAL method)
Purity	>95%
Characteristic	The isoelectric point is 7.9.
Applications	SDS-PAGE; WB; ELISA; IP.
Stability	The thermal stability is described by the loss rate of the target protein. The loss rate

 Tel: 1-631-559-9269 1-516-512-3133

 Email: info@creative-biomart.com  Fax: 1-631-938-8127

 45-1 Ramsey Road, Shirley, NY 11967, USA

was determined by accelerated thermal degradation test, that is, incubate the protein at 37°C for 48h, and no obvious degradation and precipitation were observed. (Referring from China Biological Products Standard, which was calculated by the Arrhenius equation.) The loss of this protein is less than 5% within the expiration date under appropriate storage condition.

Storage	Avoid repeated freeze/thaw cycles. Store at 2-8°C for one month. Aliquot and store at -80°C for 12 months.
Storage buffer	Supplied as lyophilized form in PBS, pH7.4, containing 5% sucrose, 0.01% sarcosyl.
Reconstitution	Reconstitute in sterile PBS, pH7.2-pH7.4.

GENE INFORMATION

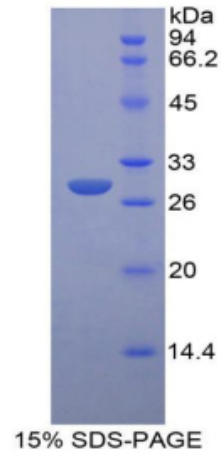
Gene Name	lgf2r insulin-like growth factor 2 receptor [<i>Rattus norvegicus</i> (Norway rat)]
Official Symbol	lgf2r
Synonyms	lgf2r; insulin-like growth factor 2 receptor; Igfr2; IGF-IIR; cation-independent mannose-6-phosphate receptor
Gene ID	25151
mRNA Refseq	NM_012756.2
Protein Refseq	NP_036888.2
UniProt ID	G3V824

 Tel: 1-631-559-9269 1-516-512-3133

 Email: info@creative-biomart.com  Fax: 1-631-938-8127

 45-1 Ramsey Road, Shirley, NY 11967, USA

SDS-PAGE



 Tel: 1-631-559-9269 1-516-512-3133

 Email: info@creative-biomart.com  Fax: 1-631-938-8127

 45-1 Ramsey Road, Shirley, NY 11967, USA