

Recombinant Rat Igfbp1 protein, His-tagged

Cat. No. Igfbp1-31R Lot. No. (See product label)

SPECIFICATION

Product Overview	Recombinant Rat Igfbp1(Met1~Asn272) fused with His tag at N-terminal was expressed in E. coli.
Species	Rat
Source	E.coli
ProteinLength	Met1~Asn272
Description	Igfbp1 played an important role in many functions.
Form	PBS, pH7.4, containing 0.01% SKL, 1mM DTT, 5% Trehalose and Proclin300
Molecular Mass	31.2kDa
Endotoxin	<1.0EU per 1g (determined by the LAL method)
Purity	> 95%
Applications	Positive Control; Immunogen; SDS-PAGE; WB. If bio-activity of the protein is needed, please check active protein
Stability	The thermal stability is described by the loss rate. The loss rate was determined by accelerated thermal degradation test, that is, incubate the protein at 37 centigrade for 48h, and no obvious degradation and precipitation were observed. The loss rate is

 Tel: 1-631-559-9269 1-516-512-3133

 Email: info@creative-biomart.com  Fax: 1-631-938-8127

 45-1 Ramsey Road, Shirley, NY 11967, USA

less than 5% within the expiration date under appropriate storage condition.

Storage

Avoid repeated freeze/thaw cycles. Store at 2-8 centigrade for one month. Aliquot and store at -80 centigrade for 12 months.

Reconstitution

Reconstitute in PBS or others

GENE INFORMATION

Gene Name

[Igf1p1 insulin-like growth factor binding protein 1 \[Rattus norvegicus \]](#)

Official Symbol

[Igf1p1](#)

Synonyms

IGFBP1; insulin-like growth factor binding protein 1; insulin-like growth factor-binding protein 1; IBP-1; IGFBP-1; placental protein 12; IGF-binding protein 1; IBP1; IGFBP1; IGF-BP25;

Gene ID

[25685](#)

mRNA Refseq


[NM_013144](#)

Protein Refseq

[NP_037276](#)

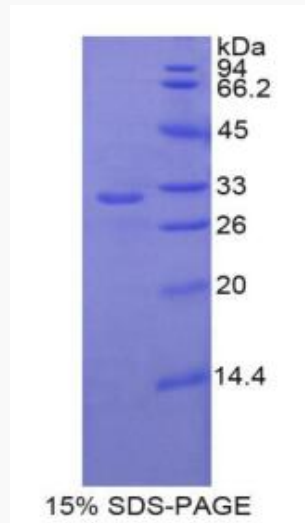
UniProt ID

[P21743](#)

 Tel: 1-631-559-9269 1-516-512-3133

 Email: info@creative-biomart.com  Fax: 1-631-938-8127

 45-1 Ramsey Road, Shirley, NY 11967, USA



Tel: 1-631-559-9269 1-516-512-3133

Email: info@creative-biomart.com Fax: 1-631-938-8127

45-1 Ramsey Road, Shirley, NY 11967, USA