

Recombinant Mouse Igfbp2 Protein, Full Length, C-His tagged

Cat. No. Igfbp2-01MFL Lot. No. (See product label)

SPECIFICATION

Product Overview	Recombinant mouse IGFBP-2 (Full length), fused to His-tag at C-terminus, was expressed in HEK293 cell and purified by using conventional chromatography techniques.
Species	Mouse
Source	HEK293
ProteinLength	Full Length
Description	<p>IGFBP-2, also known as insulin-like growth factor binding protein 2, is a member of IGFBP superfamily. IGFBPs modulate the biological activities of IGF proteins and have a high affinity for IGFs. IGFBPs are not merely carrier proteins for IGFs, but hold a central position in IGF ligand-receptor interactions through influences on both the bioavailability and distribution of IGFs in the extracellular environment. During development, IGFBP-2 is expressed in a number of tissues. The highest expression level is found in the central nervous system. In adults, high expression levels are also detected in the central nervous system and in a number of reproductive tissues. This protein binds preferentially to IGF-2, exhibiting a 2 - 10 fold higher affinity for IGF-2 than for IGF-1. Also, it is overexpressed in many malignancies and is often correlated with an increasingly malignant status of the tumor, pointing to the potential involvement of IGFBP-2 in tumorigenesis.</p>
Form	Liquid

 Tel: 1-631-559-9269 1-516-512-3133

 Email: info@creative-biomart.com  Fax: 1-631-938-8127

 45-1 Ramsey Road, Shirley, NY 11967, USA

Bio-activity	Measured by its ability to inhibit proliferation using MCF-7 human breast cancer cells in the presence of Mouse IGF-2. The ED50 range $\leq 0.7 \mu\text{g/mL}$.
Molecular Mass	30.3 kDa (277aa)
AA Sequence	<p>EVLFRCPPCTPERLAACGPPPDAPCAELVREPGCGCCSVCARQEGEACGVYIPRC AQLRCYPNPGSELPLKALVTGAGTCEKRRVGTTPQQVADSDDDHSEGLVENHV DGTMNMLGGGSSAGRKPLKSGMKELAVFREKVNEQHRQMKGAKHLSLEEPKKL RPPPARTPCQQELDQVLERISTMRLPDDRGRPLEHLYSLHIPNCDKHGRYNLQCKM SLNGQRGECWCVNPNTGKPIQGAPTIRGDPECHLFYNEQQETGGAHAQSVQ</p>
Endotoxin	< 1 EU/ μg of protein (determined by LAL method)
Purity	> 85% by SDS-PAGE
Applications	SDS-PAGE, Bioactivity
Notes	For research use only. This product is not intended or approved for human, diagnostics or veterinary use.
Storage	Can be stored at +2 to +8 centigrade for 1 week. For long term storage, aliquot and store at -20 to -80 centigrade. Avoid repeated freezing and thawing cycles.
Concentration	1 mg/mL (determined by Absorbance at 280nm)
Storage Buffer	Phosphate-Buffered Saline (pH 7.4) containing 10% glycerol
References	<ol style="list-style-type: none"> 1. Yoshiyuki H., et al, (1994) Cellular Physiology. 158:444-450. 2. Agarwal N., et al, (1991) Exp Eye Res. 52:549-561.

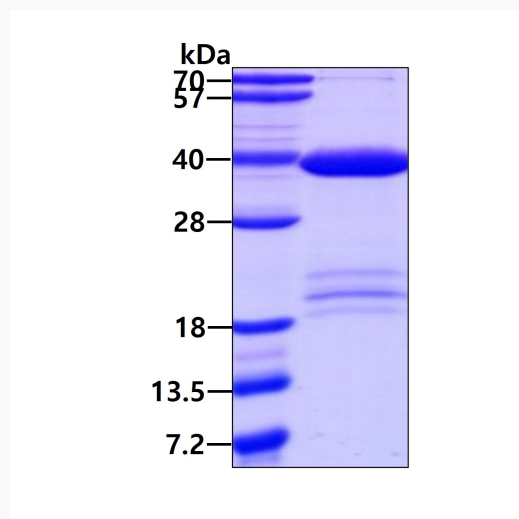
GENE INFORMATION

 Tel: 1-631-559-9269 1-516-512-3133

 Email: info@creative-biomart.com  Fax: 1-631-938-8127

 45-1 Ramsey Road, Shirley, NY 11967, USA

Gene Name	Igfbp2 insulin-like growth factor binding protein 2 [<i>Mus musculus</i> (house mouse)]
Official Symbol	Igfbp2
Synonyms	IGFBP2; insulin-like growth factor binding protein 2; insulin-like growth factor-binding protein 2; IGF-binding protein 2; IBP-2; Igfbp-2; AI255832; mIGFBP-2;
Gene ID	16008
mRNA Refseq	NM_008342
Protein Refseq	NP_032368
UniProt ID	P47877

SDS-PAGE


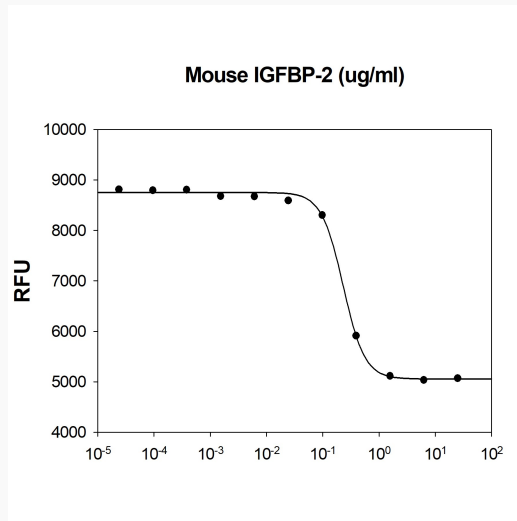
3 µg by SDS-PAGE under reducing condition and visualized by coomassie blue stain

Tel: 1-631-559-9269 1-516-512-3133

Email: info@creative-biomart.com Fax: 1-631-938-8127

45-1 Ramsey Road, Shirley, NY 11967, USA

Biological Activity



Mouse IGFBP-2 inhibit proliferation using MCF-7 human breast cancer cells in the presence of Mouse IGF-2. The ED50 range $\leq 0.7 \mu\text{g/mL}$.

 Tel: 1-631-559-9269 1-516-512-3133

 Email: info@creative-biomart.com  Fax: 1-631-938-8127

 45-1 Ramsey Road, Shirley, NY 11967, USA