

## Active Recombinant Mouse Igfbp2 protein, His-GST-tagged

Cat. No. Igfbp2-825M Lot. No. (See product label)

### SPECIFICATION

<b>Product Overview</b>	Active Recombinant Mouse Igfbp2 protein(P47877)(34~305 aa), fused with N-terminal His tag and GST tag, was expressed in E.coli.
<b>Species</b>	Mouse
<b>Source</b>	E.coli
<b>ProteinLength</b>	34-305 aa
<b>Form</b>	Lyophilized from sterile 20mM Tris, 150mM NaCl, pH8.0, containing 1mM EDTA, 1mM DTT, 0.01% SKL, 5% Trehalose and Proclin300.
<b>Bio-activity</b>	<p>Insulin Like Growth Factor Binding Protein 2 (IGFBP2) is a member of IGF binding proteins (IGFBPs) family. IGF binding proteins (IGFBPs) are proteins of 24 to 45kDa. Inhibits IGF-mediated growth and developmental rates. IGF-binding proteins prolong the half-life of the IGFs and have been shown to either inhibit or stimulate the growth promoting effects of the IGFs on cell culture. They alter the interaction of IGFs with their cell surface receptors. Besides, Insulin Like Growth Factor 2 (IGF2) has been identified as an interactor of IGFBP2, thus a binding ELISA assay was conducted to detect the interaction of recombinant mouse IGFBP2 and recombinant mouse IGF2. Briefly, IGFBP2 were diluted serially in PBS, with 0.01% BSA (pH 7.4). Duplicate samples of 100µL were then transferred to IGF2-coated microtiter wells and incubated for 2h at 37°C. Wells were washed with PBST and incubated for 1h with anti-IGFBP2 pAb, then aspirated and washed 3 times. After incubation with HRP</p>

 Tel: 1-631-559-9269 1-516-512-3133

 Email: [info@creative-biomart.com](mailto:info@creative-biomart.com)  Fax: 1-631-938-8127

 45-1 Ramsey Road, Shirley, NY 11967, USA

labelled secondary antibody, wells were aspirated and washed 3 times. With the addition of substrate solution, wells were incubated 15-25 minutes at 37°C. Finally, add 50µ stop solution to the wells and read at 450nm immediately. The binding activity of IGFBP2 and IGFBP2 was shown, and this effect was in a dose dependent manner.

<b>Molecular Mass</b>	61.6kDa
<b>Endotoxin</b>	<1.0EU per 1µg (determined by the LAL method).
<b>Purity</b>	> 95% as determined by SDS-PAGE.
<b>Storage</b>	Avoid repeated freeze/thaw cycles. Store at -20°C for 12 months. Aliquot and store at -80°C for 12 months.
<b>Reconstitution</b>	Reconstitute in 20mM Tris, 150mM NaCl (pH8.0) to a concentration of 0.1-1.0 mg/mL. Do not vortex.

## GENE INFORMATION

<b>Gene Name</b>	<a href="#">lgfbp2 insulin-like growth factor binding protein 2 [ Mus musculus ]</a>
<b>Official Symbol</b>	<a href="#">lgfbp2</a>
<b>Synonyms</b>	IGFBP2; insulin-like growth factor binding protein 2; insulin-like growth factor-binding protein 2; IGF-binding protein 2; IBP-2; lgfbp-2; AI255832; mIGFBP-2;
<b>Gene ID</b>	<a href="#">16008</a>
<b>mRNA Refseq</b>	<a href="#">NM_008342</a>

 Tel: 1-631-559-9269 1-516-512-3133

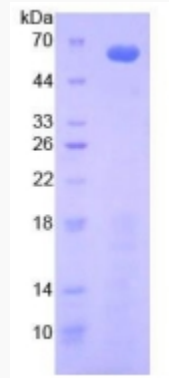
 Email: [info@creative-biomart.com](mailto:info@creative-biomart.com)  Fax: 1-631-938-8127

 45-1 Ramsey Road, Shirley, NY 11967, USA

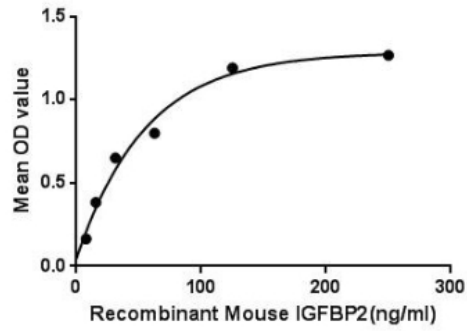
Protein Refseq


NP\_032368

SDS-PAGE



Activity



 Tel: 1-631-559-9269 1-516-512-3133

 Email: [info@creative-biomart.com](mailto:info@creative-biomart.com)  Fax: 1-631-938-8127

 45-1 Ramsey Road, Shirley, NY 11967, USA