

## Recombinant Rat Igfbp3 protein, His-tagged

Cat. No. Igfbp3-831R    Lot. No. (See product label)

### SPECIFICATION

<b>Product Overview</b>	Recombinant Rat Igfbp3 aa. (Asn137~Pro274) fused with N-terminal His tag was produced in E. coli cells.
<b>Species</b>	Rat
<b>Source</b>	E.coli
<b>ProteinLength</b>	Asn137~Pro274
<b>Description</b>	An insulin growth factor (Igf) binding protein; involved in modulating IGF-I action.
<b>Form</b>	Freeze-dried powder
<b>Molecular Mass</b>	21kDa as determined by SDS-PAGE reducing conditions
<b>Endotoxin</b>	<1.0EU per 1g (determined by the LAL method)
<b>Purity</b>	> 92%
<b>Characteristic</b>	The isoelectric point is 9.
<b>Applications</b>	SDS-PAGE; WB; ELISA; IP; CoIP; Purification; Amine Reactive Labeling
<b>Stability</b>	The thermal stability is described by the loss rate. The loss rate was determined by accelerated thermal degradation test, that is, incubate the protein at 37°C for 48h,

 Tel: 1-631-559-9269    1-516-512-3133

 Email: [info@creative-biomart.com](mailto:info@creative-biomart.com)     Fax: 1-631-938-8127

 45-1 Ramsey Road, Shirley, NY 11967, USA

and no obvious degradation and precipitation were observed. The loss rate is less than 5% within the expiration date under appropriate storage condition.

**Storage**

Avoid repeated freeze/thaw cycles. Store at 2-8°C for one month. Aliquot and store at -80°C for 12 months.

**Concentration**

200µg/mL

**Storage buffer**

PBS, pH7.4, containing 1mM DTT, 5% trehalose, 0.01% sarcosyl and Proclin300

**Reconstitution**

Reconstitute in PBS (pH7.4) to a concentration of 0.1-1.0 mg/mL. Do not vortex.

## GENE INFORMATION

**Gene Name**

[lgfbp3 insulin-like growth factor binding protein 3 \[ Rattus norvegicus \(Norway rat\) \]](#)

**Official Symbol**

[lgfbp3](#)

**Synonyms**

lgfbp3; IGF-BP3; insulin-like growth factor-binding protein 3; IBP-3; IGF-binding protein 3; IGFBP-3; insulin-like growth factor-binding protein (IGF-BP3)

**Gene ID**

[24484](#)

**mRNA Refseq**

[NM\\_012588.2](#)

**Protein Refseq**

[NP\\_036720.2](#)

**UniProt ID**

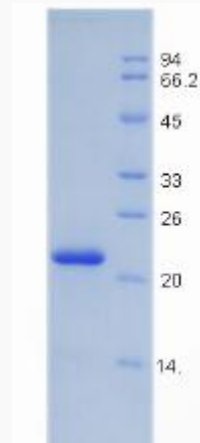
[P15473](#)

 Tel: 1-631-559-9269 1-516-512-3133

 Email: [info@creative-biomart.com](mailto:info@creative-biomart.com)  Fax: 1-631-938-8127

 45-1 Ramsey Road, Shirley, NY 11967, USA

**SDS-PAGE**



 Tel: 1-631-559-9269 1-516-512-3133

 Email: [info@creative-biomart.com](mailto:info@creative-biomart.com)  Fax: 1-631-938-8127

 45-1 Ramsey Road, Shirley, NY 11967, USA