

Recombinant Mouse Ighe Protein (Thr206-Thr301), N-His tagged

Cat. No. Ighe-3819M **Lot. No.** (See product label)

SPECIFICATION

Product Overview	Recombinant Mouse IGHE (Thr206-Thr301) fused with the N-His tag was expressed in E. coli.
Species	Mouse
Source	E.coli
ProteinLength	Thr206-Thr301
Description	Predicted to enable antigen binding activity and immunoglobulin receptor binding activity. Predicted to be involved in several processes, including activation of immune response; defense response to other organism; and phagocytosis. Predicted to be part of immunoglobulin complex, circulating. Predicted to be active in external side of plasma membrane. Orthologous to human IGHE (immunoglobulin heavy constant epsilon) .
Form	Lyophilized powder/frozen liquid
Molecular Mass	13.11 kDa
Purity	>90% as determined by SDS-PAGE.
Notes	For research use only.

 Tel: 1-631-559-9269 1-516-512-3133

 Email: info@creative-biomart.com  Fax: 1-631-938-8127

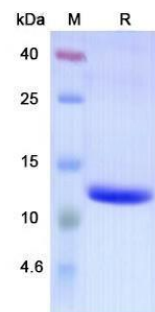
 45-1 Ramsey Road, Shirley, NY 11967, USA

Storage	Use a manual defrost freezer and avoid repeated freeze thaw cycles. Store at 2 to 8 centigrade for one week. Store at -20 to -80 centigrade for twelve months from the date of receipt.
Storage Buffer	0.01M PBS, pH 7.4, 0.02% NLS
Reconstitution	Reconstitute in sterile water for a stock solution.
Shipping	They are shipped out with dry ice/blue ice unless customers require otherwise.

GENE INFORMATION

Gene Name	Ighε Immunoglobulin heavy constant epsilon [Mus musculus (house mouse)]
Official Symbol	Ighε
Synonyms	Ighe; Immunoglobulin heavy constant epsilon; Gm900;
Gene ID	380792
UniProt ID	P06336

SDS-PAGE



 Tel: 1-631-559-9269 1-516-512-3133

 Email: info@creative-biomart.com  Fax: 1-631-938-8127

 45-1 Ramsey Road, Shirley, NY 11967, USA