

Recombinant Mouse Il10ra Protein, His-tagged

Cat. No. Il10ra-1658M **Lot. No.** (See product label)

SPECIFICATION

Product Overview	Recombinant Mouse Il10ra Protein (Leu17-Ile241) with N-His tag was expressed in E. coli.
Species	Mouse
Source	E.coli
ProteinLength	Leu17-Ile241
Description	Predicted to enable interleukin-10 binding activity and interleukin-10 receptor activity. Predicted to be involved in several processes, including negative regulation of autophagy; positive regulation of receptor signaling pathway via JAK-STAT; and ubiquitin-dependent endocytosis. Predicted to be located in cytosol. Predicted to be integral component of plasma membrane. Predicted to colocalize with plasma membrane. Human ortholog(s) of this gene implicated in inflammatory bowel disease 28. Orthologous to human IL10RA (interleukin 10 receptor subunit alpha).
Form	Freeze-dried powder
Molecular Mass	Predicted Molecular Mass: 27.5 kDa Accurate Molecular Mass: 28 kDa
Purity	> 95%
Applications	Positive Control; Immunogen; SDS-PAGE; WB.

 Tel: 1-631-559-9269 1-516-512-3133

 Email: info@creative-biomart.com  Fax: 1-631-938-8127

 45-1 Ramsey Road, Shirley, NY 11967, USA

Stability	The thermal stability is described by the loss rate. The loss rate was determined by accelerated thermal degradation test, that is, incubate the protein at 37 centigrade for 48h, and no obvious degradation and precipitation were observed. The loss rate is less than 5% within the expiration date under appropriate storage condition.
Storage	Avoid repeated freeze/thaw cycles. Store at 2-8 centigrade for one month. Aliquot and store at -80 centigrade for 12 months.
Storage Buffer	100mM NaHCO ₃ , 500mM NaCl, pH8.3, containing 1mM EDTA, 1mM DTT, 0.01% SKL, 5% Trehalose and Proclin300.
Reconstitution	Reconstitute in 100mM NaHCO ₃ , 500mM NaCl (pH8.3) to a concentration of 0.1-1.0 mg/mL. Do not vortex.

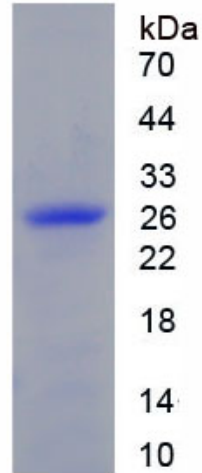
GENE INFORMATION

Gene Name	Il10ra interleukin 10 receptor, alpha [<i>Mus musculus</i> (house mouse)]
Official Symbol	Il10ra
Synonyms	IL10RA; interleukin 10 receptor, alpha; interleukin-10 receptor subunit alpha; IL-10R1; IL-10RA; IL-10R subunit 1; IL-10R subunit alpha; IL-10 receptor subunit alpha; interleukin-10 receptor subunit 1; Il10r; CDw210; CDw210a; mLIL-10R; AW553859;
Gene ID	16154
mRNA Refseq	NM_008348
Protein Refseq	NP_032374
UniProt ID	Q61727

 Tel: 1-631-559-9269 1-516-512-3133

 Email: info@creative-biomart.com  Fax: 1-631-938-8127

 45-1 Ramsey Road, Shirley, NY 11967, USA



Tel: 1-631-559-9269 1-516-512-3133

Email: info@creative-biomart.com Fax: 1-631-938-8127

45-1 Ramsey Road, Shirley, NY 11967, USA