

Recombinant Mouse Il10ra protein, His & GST-tagged

Cat. No. Il10ra-1726M **Lot. No.** (See product label)

SPECIFICATION

Product Overview	Recombinant Mouse Il10ra aa. (Leu17~Ile241) fused with N-terminal His & GST tag was produced in E. coli cells.
Species	Mouse
Source	E.coli
ProteinLength	Leu17~Ile241
Form	Freeze-dried powder
Molecular Mass	57kDa as determined by SDS-PAGE reducing conditions.
Endotoxin	<1.0EU per 1ug (determined by the LAL method)
Purity	>98%
Characteristic	The isoelectric point is 6.8.
Applications	Positive Control; Immunogen; SDS-PAGE; WB.
Stability	The thermal stability is described by the loss rate of the target protein. The loss rate was determined by accelerated thermal degradation test, that is, incubate the protein at 37°C for 48h, and no obvious degradation and precipitation were observed. (Referring from China Biological Products Standard, which was calculated by the

 Tel: 1-631-559-9269 1-516-512-3133

 Email: info@creative-biomart.com  Fax: 1-631-938-8127

 45-1 Ramsey Road, Shirley, NY 11967, USA

Arrhenius equation.) The loss of this protein is less than 5% within the expiration date under appropriate storage condition.

Storage

Avoid repeated freeze/thaw cycles. Store at 2-8°C for one month. Aliquot and store at -80°C for 12 months.

Concentration

200ug/mL

Storage buffer

100mM NaHCO₃, 500mM NaCl, pH8.3, containing 1mM EDTA, 1mM DTT, 0.01% sarcosyl, 5%Trehalose and Proclin300.

Reconstitution

Reconstitute in 100mM NaHCO₃, 500mM NaCl (pH8.3) to a concentration of 0.1-1.0 mg/mL. Do not vortex.

GENE INFORMATION

Gene Name

Il10ra interleukin 10 receptor, alpha [*Mus musculus* (house mouse)]

Official Symbol

Il10ra

Synonyms

Il10ra; interleukin 10 receptor, alpha; Il10r; CDw210; CDw210a; IL-10R1; IL-10RA; mL-10R; AW553859; interleukin-10 receptor subunit alpha; IL-10 receptor subunit alpha; IL-10R subunit 1; IL-10R subunit alpha; interleukin-10 receptor subunit 1

Gene ID

16154

mRNA Refseq

NM_008348.3

Protein Refseq

NP_032374.1

UniProt ID

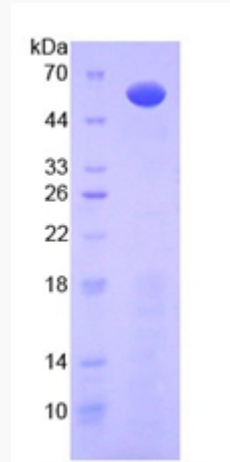
Q61727

 Tel: 1-631-559-9269 1-516-512-3133

 Email: info@creative-biomart.com  Fax: 1-631-938-8127

 45-1 Ramsey Road, Shirley, NY 11967, USA

SDS-PAGE



 Tel: 1-631-559-9269 1-516-512-3133

 Email: info@creative-biomart.com  Fax: 1-631-938-8127

 45-1 Ramsey Road, Shirley, NY 11967, USA