

Recombinant Mouse Il11ra1 protein, His-tagged

Cat. No. Il11ra1-1329M Lot. No. (See product label)

SPECIFICATION

Product Overview	Recombinant Mouse Il11ra1 aa. (Trp59~Arg217 (Accession # Q64385) fused with N-terminal His tag was produced in E. coli cells.
Species	Mouse
Source	E.coli
ProteinLength	Trp59~Arg217
Form	Freeze-dried powder
Molecular Mass	20kDa as determined by SDS-PAGE reducing conditions.
Endotoxin	<1.0EU per 1g (determined by the LAL method)
Purity	>95%
Characteristic	The isoelectric point is 5.9.
Applications	SDS-PAGE; WB; ELISA; IP.
Stability	The thermal stability is described by the loss rate. The loss rate was determined by accelerated thermal degradation test, that is, incubate the protein at 37°C for 48h, and no obvious degradation and precipitation were observed. The loss rate is less than 5% within the expiration date under appropriate storage condition.

 Tel: 1-631-559-9269 1-516-512-3133

 Email: info@creative-biomart.com  Fax: 1-631-938-8127

 45-1 Ramsey Road, Shirley, NY 11967, USA

Storage	Avoid repeated freeze/thaw cycles. Store at 2-8°C for one month. Aliquot and store at -80°C for 12 months.
Storage buffer	Supplied as lyophilized form in PBS, pH7.4, containing 5% trehalose, 0.01% sarcosyl
Reconstitution	Reconstitute in 20mM Tris, 150mM NaCl (pH8.0) to a concentration of 0.1-1.0 mg/mL. Do not vortex

GENE INFORMATION

Gene Name	Il11ra1 interleukin 11 receptor, alpha chain 1 [<i>Mus musculus</i> (house mouse)]
Official Symbol	Il11ra1
Synonyms	Il11ra1; interleukin 11 receptor, alpha chain 1; NR1; GP130; Il11ra; Il-11ra; Il11ra2; AI314697; interleukin-11 receptor subunit alpha-1; IL-11 receptor subunit alpha-1; IL-11R subunit alpha-1; IL-11R-alpha-1; IL-11RA1; Il-11ra-alpha; NR-1; enhancer trap locus homolog 2; etl-2; interleukin 11 receptor, alpha chain 2; locus 2; novel cytokine receptor 1
Gene ID	16157
mRNA Refseq	NM_001163401.1
Protein Refseq	NP_001156873.1
UniProt ID	Q64385

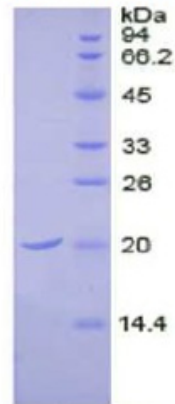
 Tel: 1-631-559-9269 1-516-512-3133

 Email: info@creative-biomart.com  Fax: 1-631-938-8127

 45-1 Ramsey Road, Shirley, NY 11967, USA

SDS-PAGE

Mouse IL11Ra



15% SDS-PAGE

 Tel: 1-631-559-9269 1-516-512-3133

 Email: info@creative-biomart.com  Fax: 1-631-938-8127

 45-1 Ramsey Road, Shirley, NY 11967, USA