

Recombinant Rat Il11ra1 protein, His & T7-tagged

Cat. No. Il11ra1-1330R **Lot. No.** (See product label)

SPECIFICATION

Product Overview	Recombinant Rat Il11ra1 aa. (Thr24~Ala371 (Accession# Q99MF4) fused with N-terminal His & T7 tag was produced in E. coli cells.
Species	Rat
Source	E.coli
ProteinLength	Thr24~Ala371
Description	Receptor for IL-11; functions with signaling molecule gp130.
Form	Freeze-dried powder
Molecular Mass	Predicted Molecular Mass: 41.9kDa
Endotoxin	<1.0EU per 1g (determined by the LAL method)
Purity	>95%
Characteristic	The isoelectric point is 6.1.
Applications	SDS-PAGE; WB; ELISA; IP.
Stability	The thermal stability is described by the loss rate. The loss rate was determined by accelerated thermal degradation test, that is, incubate the protein at 37°C for 48h,

 Tel: 1-631-559-9269 1-516-512-3133

 Email: info@creative-biomart.com  Fax: 1-631-938-8127

 45-1 Ramsey Road, Shirley, NY 11967, USA

and no obvious degradation and precipitation were observed. The loss rate is less than 5% within the expiration date under appropriate storage condition.

Storage

Avoid repeated freeze/thaw cycles. Store at 2-8°C for one month. Aliquot and store at -80°C for 12 months.

Storage buffer

Supplied as lyophilized form in PBS, pH7.4, containing 5% trehalose, 0.01% sarcosyl

Reconstitution

Reconstitute in 20mM Tris, 150mM NaCl (pH8.0) to a concentration of 0.1-1.0 mg/mL.
Do not vortex

GENE INFORMATION

Gene Name

Il11ra1 interleukin 11 receptor subunit alpha 1 [*Rattus norvegicus* (Norway rat)]

Official Symbol

Il11ra1

Synonyms

Il11ra1; interleukin 11 receptor subunit alpha 1; interleukin-11 receptor subunit alpha; IL-11 receptor subunit alpha; IL-11R subunit alpha; IL-11R-alpha; IL-11RA; interleukin 11 receptor, alpha chain 1; interleukin-11 receptor alpha chain

Gene ID

245983

mRNA Refseq

NM_139116.1

Protein Refseq

NP_620816.1

UniProt ID

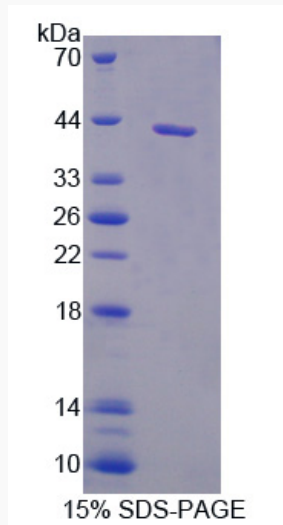
Q99MF4

 Tel: 1-631-559-9269 1-516-512-3133

 Email: info@creative-biomart.com  Fax: 1-631-938-8127

 45-1 Ramsey Road, Shirley, NY 11967, USA

SDS-PAGE



 Tel: 1-631-559-9269 1-516-512-3133

 Email: info@creative-biomart.com  Fax: 1-631-938-8127

 45-1 Ramsey Road, Shirley, NY 11967, USA