

Recombinant Mouse Il11ra1 protein, His-tagged

Cat. No. Il11ra1-1571M Lot. No. (See product label)

SPECIFICATION

Product Overview	Recombinant Mouse Il11ra1 protein(Q64385)(Ser24-Ala372), fused with C-terminal His tag, was expressed in HEK293.
Species	Mouse
Source	C-His
ProteinLength	Ser24-Ala372
Tag	C-His
Form	Lyophilized from 0.22µm filtered solution in PBS (pH 7.4). Normally 8% trehalose is added as protectant before lyophilization.
Bio-activity	
Molecular Mass	The protein has a predicted MW of 39.19 kDa. Due to glycosylation, the protein migrates to 48-58 kDa based on Tris-Bis PAGE result.
Endotoxin	Less than 1EU per µg by the LAL method.
Purity	> 95% as determined by Tris-Bis PAGE; > 95% as determined by HPLC.
Storage	Reconstituted protein stable at -80°C for 12 months, 4°C for 1 week. Use a manual defrost freezer and avoid repeated freeze-thaw cycles.

 Tel: 1-631-559-9269 1-516-512-3133

 Email: info@creative-biomart.com  Fax: 1-631-938-8127

 45-1 Ramsey Road, Shirley, NY 11967, USA

Reconstitution Centrifuge tubes before opening. Reconstituting to a concentration more than 100 µg/ml is recommended. Dissolve the lyophilized protein in distilled water.

GENE INFORMATION

Gene Name [IL11ra1 interleukin 11 receptor, alpha chain 1 \[Mus musculus \]](#)

Official Symbol [IL11ra1](#)

Synonyms IL11RA1; interleukin 11 receptor, alpha chain 1; interleukin-11 receptor subunit alpha-1; NR-1; etl-2; locus 2; IL-11RA1; Il-11ra-alpha; IL-11R-alpha-1; IL-11R subunit alpha-1; novel cytokine receptor 1; enhancer trap locus homolog 2; IL-11 receptor subunit alpha-1; interleukin 11 receptor, alpha chain 2; NR1; GP130; Il11ra; Il-11ra; Il11ra2; AI314697;

Gene ID [16157](#)

mRNA Refseq [NM_001163401](#)

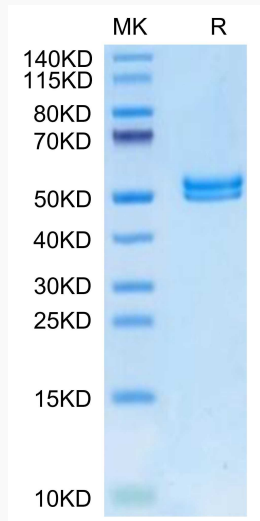
Protein Refseq [NP_001156873](#)

 Tel: 1-631-559-9269 1-516-512-3133

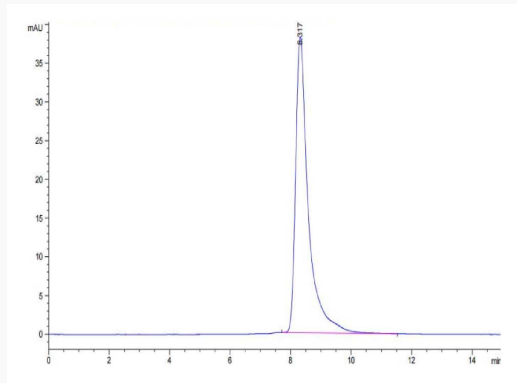
 Email: info@creative-biomart.com  Fax: 1-631-938-8127

 45-1 Ramsey Road, Shirley, NY 11967, USA

Tris-Bis PAGE



SEC-HPLC



 Tel: 1-631-559-9269 1-516-512-3133

 Email: info@creative-biomart.com  Fax: 1-631-938-8127

 45-1 Ramsey Road, Shirley, NY 11967, USA