

Active Recombinant Mouse Il12a Protein, His-Tagged

Cat. No. Il12a-01M Lot. No. (See product label)

SPECIFICATION

Product Overview	Recombinant mouse Il12a Protein, His-tagged was expressed in E. coli cell
Species	Mouse
Source	E.coli
Description	Active IL-12 is a p70 disulfide-linked dimer composed of p35 and p40 subunits. The protein is a pleiotropic cytokine produced primarily by antigen presenting cells and has multiple effects on T lymphocytes and natural killer cells in terms of stimulating cytotoxicity, proliferation, production of other cytokines and Th1 subset differentiation.
Form	Lyophilized powder
AA Sequence	MRVIPVSGPARCLSQSRNLLKTTDDMVKTAREKCLKHYSCTAEDIDHEDITRDQTSTL KTCLPLELHKNESCLATRETSSTTRGSCLPQKTSML MTLCLGSIYEDLKMYQTEFQAINAALQNHNHQQIILDKGMLVAIDELMQSLNHNGETL RQKPPVGEADPYRVKMKLCILLHAFSTRVVTINR VMGYLSSA with polyhistidine tag at the C-terminus
Endotoxin	<0.1 EU per 1 µg of the protein by the LAL method.
Bio-activity	Measure by its ability to induce proliferation in T-cell enriched PBMC. The ED50 for this effect is <0.2 ng/mL.
Purity	>98% as determined by SDS-PAGE. Ni-NTA chromatography

 Tel: 1-631-559-9269 1-516-512-3133

 Email: info@creative-biomart.com  Fax: 1-631-938-8127

 45-1 Ramsey Road, Shirley, NY 11967, USA

Storage Buffer	The protein was lyophilized from a solution containing 1X PBS, pH 7.4.
Reconstitution	It is recommended to reconstitute the lyophilized protein in sterile H ₂ O to a concentration not less than 100 µg/mL and incubate the stock solution for at least 20 min to ensure sufficient re-dissolved.
Storage	Lyophilized protein should be stored at -20°C. Upon reconstitution, protein aliquots should be stored at -20°C or -80°C.
Notes	Please use within one month after protein reconstitution.

GENE INFORMATION

Gene Name	Il12a interleukin 12a [<i>Mus musculus</i> (house mouse)]
Official Symbol	Il12a
Synonyms	p35; LI12a; Il-12a; IL-12p35
Gene ID	16159
mRNA Refseq	NM_001159424.3
Protein Refseq	NP_001152896.2
UniProt ID	P43431

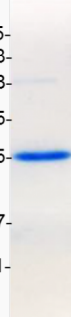
 Tel: 1-631-559-9269 1-516-512-3133

 Email: info@creative-biomart.com  Fax: 1-631-938-8127

 45-1 Ramsey Road, Shirley, NY 11967, USA

kDa

75-
63-
48-
35-
25-
17-
11-



 Tel: 1-631-559-9269 1-516-512-3133

 Email: info@creative-biomart.com  Fax: 1-631-938-8127

 45-1 Ramsey Road, Shirley, NY 11967, USA