

## Recombinant Murine Interleukin 12a

**Cat. No.** II12a-209M    **Lot. No.** (See product label)

### SPECIFICATION

<b>Product Overview</b>	Recombinant murine IL-12-p40 is a 40.0 kDa protein containing 313 amino acid residues. It is expressed in <i>CHO cells</i> . MW=40kDa.
<b>Species</b>	Mouse
<b>Source</b>	CHO
<b>Description</b>	Interleukin-12 is a disulfide-linked heterodimeric protein (p70), composed of two subunits, p35 and p40, which are encoded by two different genes. Accumulating data indicate that p40 secretion precedes that of IL-12 expression. In addition, to its ability to covalently bind to p35 to form IL-12, p40 can bind to p19 to form IL-23.
<b>Purity</b>	Greater than 95% (determined by SDS-PAGE and HPLC analysis).
<b>Specific Activity</b>	NA.
<b>Endotoxin Level</b>	< 0.1 ng per g of rMu IL-12-p40 (1EU/g).
<b>Biological Activity</b>	NA.
<b>Formulation</b>	Lyophilized from a sterile-filtered solution with no additives.
<b>Reconstitution</b>	Please Note: Always centrifuge product before opening vial. The lyophilized protein should be reconstituted with distilled, sterile water to a concentration of 0.1-1.0 mg/ml. For further dilution, carrier protein (0.1% BSA or HSA) should be added to avoid loss

 Tel: 1-631-559-9269    1-516-512-3133

 Email: [info@creative-biomart.com](mailto:info@creative-biomart.com)     Fax: 1-631-938-8127

 45-1 Ramsey Road, Shirley, NY 11967, USA

of bioactivity.

**Storage**

The lyophilized protein, though stable at room temperature for up to 3 weeks, is best stored desiccated at -20°C. Reconstituted protein should be used immediately or stored long-term in undiluted working aliquots at -20°C. For long-term storage it is recommended to add a carrier protein (0.1% HSA or BSA). Avoid repeated freeze-thaw cycles.

## GENE INFORMATION

**Gene Name**

Il12a interleukin 12a [ *Mus musculus* ]

**Synonyms**

Il12a; interleukin 12a; p35; LI12a; Il-12a; IL-12p35; MGC151228; MGC151232; interleukin 12a p35 subunit; interleukin 12a

**Gene ID**

16159

**mRNA Refseq**

NM\_001159424

**Protein Refseq**

NP\_001152896

**UniProt ID**

P43431

**Chromosome Location**

3 E1; 3 37.0 cM

**Pathway**

Allograft rejection; Cytokine-cytokine receptor interaction; RIG-I-like receptor signaling pathway; Jak-STAT signaling pathway; Toll-like receptor signaling pathway; Type I diabetes mellitus

**Function**

cytokine activity; growth factor activity; interleukin-12 beta subunit binding; interleukin-

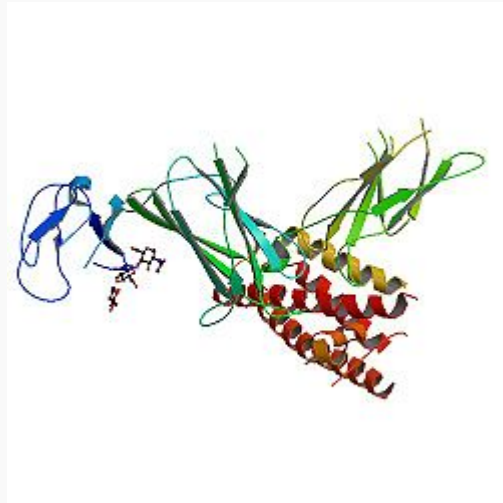
 Tel: 1-631-559-9269 1-516-512-3133

 Email: [info@creative-biomart.com](mailto:info@creative-biomart.com)  Fax: 1-631-938-8127

 45-1 Ramsey Road, Shirley, NY 11967, USA

12 receptor binding

PDB rendering based  
on 1f45.



 Tel: 1-631-559-9269 1-516-512-3133

 Email: [info@creative-biomart.com](mailto:info@creative-biomart.com)  Fax: 1-631-938-8127

 45-1 Ramsey Road, Shirley, NY 11967, USA