

Recombinant Murine Interleukin 12a, P35-P40

Cat. No. II12a-211M Lot. No. (See product label)

SPECIFICATION

Product Overview	Recombinant Murine IL-12 is a disulfide linked heterodimeric protein with a molecular weight of 75 kDa comprised of disulfide-bonded 35 kDa (p35) and 40 kDa (p40) subunits. It is expressed in <i>CHO cells</i> .
Species	Mouse
Source	CHO
Description	Interleukin 12 (IL-12) is a regulatory protein produced by activated B lymphocytes and macrophages. The biological activities of IL-12 include the stimulation of growth of activated CD4+ and CD8+ T cells and NK cells. Human IL-12 also promotes the development of proinflammatory/TH1-like CD4+ cells and cytotoxic CD8+T cells.
Purity	Greater than 98% (determined by SDS-PAGE and HPLC analysis).
Specific Activity	$\geq 1 \times 10^7$ IU/mg.
Endotoxin Level	< 0.1 ng per g of rMu IL-12 (1EU/g).
Biological Activity	The ED ₅₀ as determined by the dose-dependent stimulation of INF- γ production by murine splenocytes co-stimulated with IL-18 is ≤ 0.1 ng / ml, corresponding to a specific activity of $\geq 1 \times 10^7$ units/mg.
Formulation	Lyophilized from a sterile-filtered protein solution in 0.5 x PBS (pH 7.2).

 Tel: 1-631-559-9269 1-516-512-3133

 Email: info@creative-biomart.com  Fax: 1-631-938-8127

 45-1 Ramsey Road, Shirley, NY 11967, USA

Reconstitution Please Note: Always centrifuge product before opening vial. Reconstitute in water to a concentration of 0.1-1.0 mg/ml. This solution can then be diluted into other aqueous buffers and stored at -20°C for future use.

Storage The lyophilized protein, though stable at room temperature for up to 3 weeks, is best stored desiccated at -20°C. Reconstituted murine IL-12 should be used immediately or stored long-term in undiluted working aliquots at -20°C. Avoid repeated freeze / thaw cycles.

GENE INFORMATION

Gene Name [IL12a interleukin 12a \[Mus musculus \]](#)

Synonyms IL12a; interleukin 12a; p35; LI12a; Il-12a; IL-12p35; MGC151228; MGC151232; interleukin 12a p35 subunit; interleukin 12a

Gene ID [16159](#)

mRNA Refseq [NM_001159424](#)

Protein Refseq [NP_001152896](#)

UniProt ID [P43431](#)

Chromosome Location 3 E1; 3 37.0 cM

Pathway Allograft rejection; Cytokine-cytokine receptor interaction; RIG-I-like receptor signaling pathway; Jak-STAT signaling pathway; Toll-like receptor signaling pathway; Type I diabetes mellitus

 Tel: 1-631-559-9269 1-516-512-3133

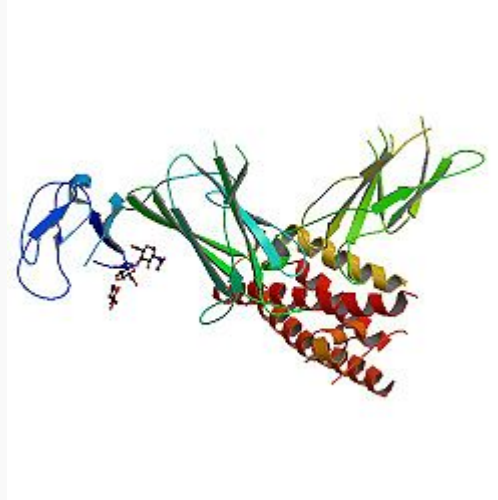
 Email: info@creative-biomart.com  Fax: 1-631-938-8127

 45-1 Ramsey Road, Shirley, NY 11967, USA

Function

cytokine activity; growth factor activity; interleukin-12 beta subunit binding; interleukin-12 receptor binding

PDB rendering based on 1f45.



 Tel: 1-631-559-9269 1-516-512-3133

 Email: info@creative-biomart.com  Fax: 1-631-938-8127

 45-1 Ramsey Road, Shirley, NY 11967, USA