

Recombinant Mouse Interleukin 12a

Cat. No. II12a-226M Lot. No. (See product label)

SPECIFICATION

Species	Mouse
Source	Sf21 Cells
Description	Interleukin 12 (IL-12, NK cell stimulatory factor, cytotoxic lymphocyte maturation factor) is a heterodimeric cytokine that is naturally produced by dendritic cells, macrophages and human B-lymphoblastoid cells (NC-37) in response to antigenic stimulation.
Molecular Weight	The predicted molecular weight of Recombinant Mouse IL-12 is Mr 54 kDa. However, the actual molecular weight as observed by migration on SDS Page is Mr 70 kDa.
State Of Matter	Lyophilized.
Purity	>97% by SDS Page and analyzed by silver stain.
Endotoxin	<1.0 EU/g as determined by the LAL method.
Storage And Stability	This lyophilized protein is stable for six to twelve months when stored desiccated at -20°C to -70°C. After aseptic reconstitution, this protein may be stored at 2°C to 8°C for one month or at -20°C to -70°C in a manual defrost freezer. Avoid Repeated Freeze Thaw Cycles. See Product Insert for exact lot specific storage instructions.

GENE INFORMATION

 Tel: 1-631-559-9269 1-516-512-3133

 Email: info@creative-biomart.com  Fax: 1-631-938-8127

 45-1 Ramsey Road, Shirley, NY 11967, USA

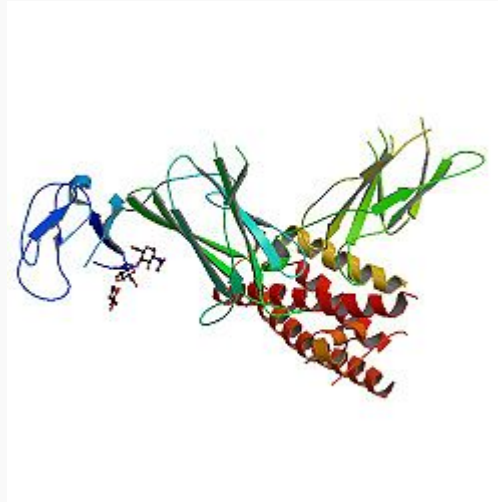
Gene Name	Il12a interleukin 12a [Mus musculus]
Synonyms	Il12a; interleukin 12a; p35; LI12a; Il-12a; IL-12p35; MGC151228; MGC151232; interleukin 12a p35 subunit; interleukin 12a
Gene ID	16159
mRNA Refseq	NM_001159424
Protein Refseq	NP_001152896
UniProt ID	P43431
Chromosome Location	3 E1; 3 37.0 cM
Pathway	Allograft rejection; Cytokine-cytokine receptor interaction; RIG-I-like receptor signaling pathway; Jak-STAT signaling pathway; Toll-like receptor signaling pathway; Type I diabetes mellitus
Function	cytokine activity; growth factor activity; interleukin-12 beta subunit binding; interleukin-12 receptor binding

 Tel: 1-631-559-9269 1-516-512-3133

 Email: info@creative-biomart.com  Fax: 1-631-938-8127

 45-1 Ramsey Road, Shirley, NY 11967, USA

PDB rendering based
on 1f45.



 Tel: 1-631-559-9269 1-516-512-3133

 Email: info@creative-biomart.com  Fax: 1-631-938-8127

 45-1 Ramsey Road, Shirley, NY 11967, USA