

Recombinant Mouse Il12a Protein (Met23-Ser335, Arg23-Ala215)

Cat. No. Il12a-6737M **Lot. No.** (See product label)

SPECIFICATION

Product Overview	Recombinant mouse Il12a (Met23-Ser335&Arg23-Ala215) without tag was expressed in mammalian cells.
Species	Mouse
Source	Mammalian Cells
ProteinLength	Met23-Ser335, Arg23-Ala215
Description	Enables interleukin-12 beta subunit binding activity. Contributes to cytokine activity. Acts upstream of or within several processes, including T-helper 1 cell activation; defense response to protozoan; and positive regulation of T cell activation. Located in cell surface; cytoplasm; and extracellular space. Part of interleukin-12 complex. Is expressed in brain; lung; small intestine; testis; and thymus. Human ortholog (s) of this gene implicated in hepatitis C; hepatocellular carcinoma; and primary biliary cholangitis. Orthologous to human IL12A (interleukin 12A).
Form	Lyophilized powder/frozen liquid
Molecular Mass	55.66 kDa
Purity	> 90 % as determined by SDS-PAGE
Notes	For research use only.

 Tel: 1-631-559-9269 1-516-512-3133

 Email: info@creative-biomart.com  Fax: 1-631-938-8127

 45-1 Ramsey Road, Shirley, NY 11967, USA

Storage	Use a manual defrost freezer and avoid repeated freeze thaw cycles. Store at 2 to 8 centigrade for one week. Store at -20 to -80 centigrade for twelve months from the date of receipt.
Storage Buffer	Supplied as solution form in PBS or lyophilized from PBS.
Reconstitution	Reconstitute in sterile water for a stock solution.
Shipping	They are shipped out with dry ice/blue ice unless customers require otherwise.

GENE INFORMATION

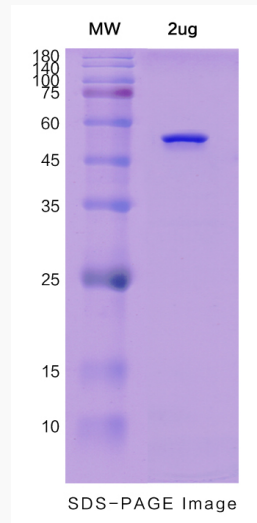
Gene Name	Il12a interleukin 12a [<i>Mus musculus</i> (house mouse)]
Official Symbol	Il12a
Synonyms	Il12a; interleukin 12a; p35; LI12a; Il-12a; IL-12p35; interleukin-12 subunit alpha; CLMF p35; IL-12 p35 subunit; IL-12 subunit p35; cytotoxic lymphocyte maturation factor 35 kDa subunit; interleukin 12a p35 subunit; interleukin-12 p35 subunit
Gene ID	16159
mRNA Refseq	NM_001159424
Protein Refseq	NP_001152896
UniProt ID	P43431

 Tel: 1-631-559-9269 1-516-512-3133

 Email: info@creative-biomart.com  Fax: 1-631-938-8127

 45-1 Ramsey Road, Shirley, NY 11967, USA

SDS-PAGE



 Tel: 1-631-559-9269 1-516-512-3133

 Email: info@creative-biomart.com  Fax: 1-631-938-8127

 45-1 Ramsey Road, Shirley, NY 11967, USA