

## Recombinant Mouse Il12b Protein (Met23-Ser335), C-His tagged

Cat. No. II12b-5694M Lot. No. (See product label)

### SPECIFICATION

<b>Product Overview</b>	Recombinant mouse Il12b (Met23-Ser335) fused with the C-terminal His tag was expressed in mammalian cells.
<b>Species</b>	Mouse
<b>Source</b>	Mammalian Cells
<b>ProteinLength</b>	Met23-Ser335
<b>Form</b>	Lyophilized powder/frozen liquid
<b>Molecular Mass</b>	34.43 kDa
<b>Purity</b>	> 90 % as determined by SDS-PAGE
<b>Notes</b>	For research use only.
<b>Storage</b>	Use a manual defrost freezer and avoid repeated freeze thaw cycles. Store at 2 to 8 centigrade for one week. Store at -20 to -80 centigrade for twelve months from the date of receipt.
<b>Storage Buffer</b>	Supplied as solution form in PBS or lyophilized from PBS.
<b>Reconstitution</b>	Reconstitute in sterile water for a stock solution.

 Tel: 1-631-559-9269 1-516-512-3133

 Email: [info@creative-biomart.com](mailto:info@creative-biomart.com)  Fax: 1-631-938-8127

 45-1 Ramsey Road, Shirley, NY 11967, USA

**Shipping**

They are shipped out with dry ice/blue ice unless customers require otherwise.

**GENE INFORMATION****Gene Name**Il12b interleukin 12b [ *Mus musculus* (house mouse) ]**Official Symbol**

Il12b

**Synonyms**

IL12B; interleukin 12b; interleukin-12 subunit beta; CLMF p40; IL-12 p40; IL-12 subunit p40; IL-23 subunit p40; cytotoxic lymphocyte maturation factor 40 kDa subunit; p40; Il-12b; Il12p40; Il-12p40;

**Gene ID**

16160

**mRNA Refseq**

NM\_008352

**Protein Refseq**

NP\_032378

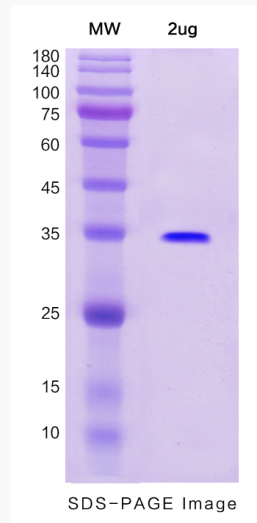
**UniProt ID**

P43432

 Tel: 1-631-559-9269 1-516-512-3133 Email: [info@creative-biomart.com](mailto:info@creative-biomart.com)  Fax: 1-631-938-8127 45-1 Ramsey Road, Shirley, NY 11967, USA



SDS-PAGE



Tel: 1-631-559-9269 1-516-512-3133

Email: [info@creative-biomart.com](mailto:info@creative-biomart.com) Fax: 1-631-938-8127

45-1 Ramsey Road, Shirley, NY 11967, USA