

Recombinant Mouse Il12b protein, His & T7-tagged

Cat. No. II12b-847M Lot. No. (See product label)

SPECIFICATION

Product Overview	Recombinant Mouse Il12b aa. (Val35~Glu302 (Accession # P43432)) fused with N-terminal His & T7 tag was produced in E. coli cells.
Species	Mouse
Source	E.coli
ProteinLength	Val35~Glu302
Description	This gene encodes the beta subunit p40 of the Interleukin 12 (IL-12) family of cytokines. Members of the IL-12 family form heterodimers consisting of heavy and light subunits linked by disulfide bonds. The product of this gene, p40, is a subunit of interleukins IL-12 and IL-23.
Form	Freeze-dried powder
Molecular Mass	Predicted Molecular Mass: 34.4kDa
Endotoxin	<1.0EU per 1g (determined by the LAL method)
Purity	> 95%
Characteristic	The isoelectric point is 6.4.
Applications	SDS-PAGE; WB; ELISA; IP

 Tel: 1-631-559-9269 1-516-512-3133

 Email: info@creative-biomart.com  Fax: 1-631-938-8127

 45-1 Ramsey Road, Shirley, NY 11967, USA

Stability	The thermal stability is described by the loss rate. The loss rate was determined by accelerated thermal degradation test, that is, incubate the protein at 37°C for 48h, and no obvious degradation and precipitation were observed. The loss rate is less than 5% within the expiration date under appropriate storage condition.
Storage	Avoid repeated freeze/thaw cycles. Store at 2-8°C for one month. Aliquot and store at -80°C for 12 months.
Storage buffer	Supplied as lyophilized form in PBS, pH7.4, containing 5% trehalose, 0.01% sarcosyl
Reconstitution	Reconstitute in sterile PBS, pH7.2-pH7.4

GENE INFORMATION

Gene Name	Il12b interleukin 12b [<i>Mus musculus</i> (house mouse)]
Official Symbol	Il12b
Synonyms	Il12b; interleukin 12b; p40; Il-12b; Il12p40; Il-12p40; interleukin-12 subunit beta; CLMF p40; IL-12 p40 subunit; IL-12 subunit p40; IL-23 subunit p40; cytotoxic lymphocyte maturation factor 40 kDa subunit; interleukin-12 p40 subunit
Gene ID	16160
mRNA Refseq	NM_001303244.1
Protein Refseq	NP_001290173.1
UniProt ID	P43432

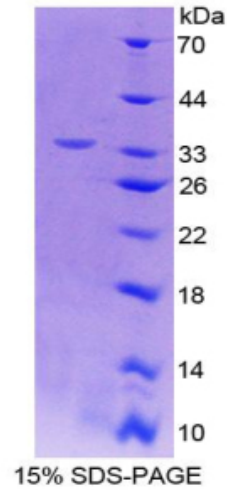
 Tel: 1-631-559-9269 1-516-512-3133

 Email: info@creative-biomart.com  Fax: 1-631-938-8127

 45-1 Ramsey Road, Shirley, NY 11967, USA



SDS-PAGE



Tel: 1-631-559-9269 1-516-512-3133

Email: info@creative-biomart.com Fax: 1-631-938-8127

45-1 Ramsey Road, Shirley, NY 11967, USA