

Recombinant Mouse Il13ra2 protein, His-tagged

Cat. No. Il13ra2-1739M Lot. No. (See product label)

SPECIFICATION

Product Overview	Recombinant Mouse Il13ra2 aa. (Asn228~Ile338 (Accession # O88786)) fused with N-terminal His tag was produced in E. coli cells.
Species	Mouse
Source	E.coli
ProteinLength	Asn228~Ile338
Form	Freeze-dried powder
Molecular Mass	16kDa as determined by SDS-PAGE reducing conditions.
Endotoxin	<1.0EU per 1ug (determined by the LAL method)
Purity	>95%
Characteristic	The isoelectric point is 5.3.
Applications	SDS-PAGE; WB; ELISA; IP.
Stability	The thermal stability is described by the loss rate of the target protein. The loss rate was determined by accelerated thermal degradation test, that is, incubate the protein at 37°C for 48h, and no obvious degradation and precipitation were observed. (Referring from China Biological Products Standard, which was calculated by the

 Tel: 1-631-559-9269 1-516-512-3133

 Email: info@creative-biomart.com  Fax: 1-631-938-8127

 45-1 Ramsey Road, Shirley, NY 11967, USA

Arrhenius equation.) The loss of this protein is less than 5% within the expiration date under appropriate storage condition.

Storage

Avoid repeated freeze/thaw cycles. Store at 2-8°C for one month. Aliquot and store at -80°C for 12 months.

Storage buffer

Supplied as lyophilized form in PBS, pH 7.4, containing 5% sucrose, 0.01% sarcosyl.

Reconstitution

Reconstitute in sterile PBS, pH7.2-pH7.4.

GENE INFORMATION

Gene Name

Il13ra2 interleukin 13 receptor, alpha 2 [*Mus musculus* (house mouse)]

Official Symbol

Il13ra2

Synonyms

Il13ra2; interleukin 13 receptor, alpha 2; CD213a2; IL-13R-alpha-2; interleukin-13 receptor subunit alpha-2

Gene ID

16165

mRNA Refseq

NM_001306059.1

Protein Refseq

NP_001292988.1

UniProt ID

O88786

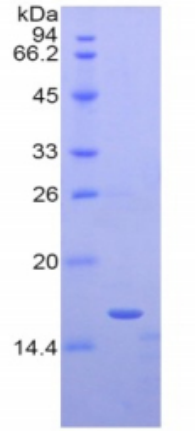
 Tel: 1-631-559-9269 1-516-512-3133

 Email: info@creative-biomart.com  Fax: 1-631-938-8127

 45-1 Ramsey Road, Shirley, NY 11967, USA

SDS-PAGE

Mouse IL13Ra2



 Tel: 1-631-559-9269 1-516-512-3133

 Email: info@creative-biomart.com  Fax: 1-631-938-8127

 45-1 Ramsey Road, Shirley, NY 11967, USA