

Active Recombinant Mouse Interleukin 15

Cat. No. II15-484M Lot. No. (See product label)

SPECIFICATION

Product Overview	Recombinant Mouse II15 produced in E.Coli is a single, non-glycosylated polypeptide chain containing 115 amino acids and having a molecular mass of 13,321 Daltons.
Species	Mouse
Source	E.coli
Description	Interleukin (IL)-15 is a pleiotropic pro-inflammatory cytokine that is expressed in several inflammatory disorders, including rheumatoid arthritis, psoriasis and pulmonary inflammatory diseases. II15 promotes activation of T cells, neutrophils and macrophages, and is critical to dendritic cell function in several model systems. Recent emerging data suggest that II15 may serve as a useful therapeutic target across a range of disease states.
Form	Recombinant II15 was lyophilized from a concentrated (1mg/ml) solution with 10mM NaP pH 8.0.
Purity	Purity Greater than 95% as determined by: Analysis by RP-HPLC. Reducing and non-reducing SDS-PAGE.
Bio-activity	Recombinant mouse II15 is fully biologically active when compared to standards. The ED50, as determined by dose-dependent induction of CTLL-2 cell proliferation, is 2.5 ng/ml.
Physical Appearance	Sterile Filtered white lyophilized (freeze-dried) powder.

 Tel: 1-631-559-9269 1-516-512-3133

 Email: info@creative-biomart.com  Fax: 1-631-938-8127

 45-1 Ramsey Road, Shirley, NY 11967, USA

Solubility	Centrifuge vial before opening. When reconstituting the product, gently pipet and wash down the sides of the vial to ensure full recovery of the protein into solution. It is recommended to reconstitute the lyophilized product with sterile water at a concentration of 0.1 mg μ s/ml, which can be further diluted into other aqueous solutions.
Purity Greater than 95% as determined by	Analysis by RP-HPLC. Reducing and non-reducing SDS-PAGE.
Protein Content determined by	UV spectroscopy at 280 nm. Analysis by RP-HPLC calibrated against a known standard. Quantitation on SDS-PAGE against a known standard.
Endotoxin Level	Endotoxin level as measured by LAL is <0.01ng/ug or <0.1EU/ug.
Amino acid sequence	MNWIDVRYDL EKIESLIQSI HIDTTLTYTDS DFHPSCKVTA MNCFLLELQV ILHEYSNMTL NETVRNVLYL ANSTLSSNKN VAESGCKECE ELEEKTFTEF LQSFIRIVQM FINTS
Storage	Lyophilized product is very stable at -20 degrees. Reconstituted material should be aliquoted and frozen at -20. It is recommended to add a carrier protein (0.1% HSA or BSA) for long term storage.
Pathways	Cytokine-cytokine receptor interaction; Jak-STAT signaling pathway

GENE INFORMATION

Gene Name	Il15 interleukin 15 [<i>Mus musculus</i>]
Official Symbol	Il15

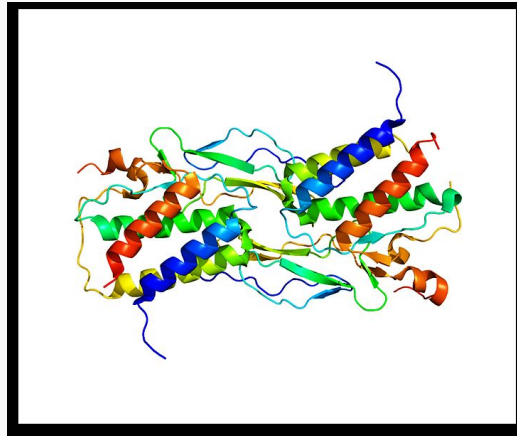
 Tel: 1-631-559-9269 1-516-512-3133

 Email: info@creative-biomart.com  Fax: 1-631-938-8127

 45-1 Ramsey Road, Shirley, NY 11967, USA

Synonyms	Il15; interleukin 15; AI503618
Gene ID	16168
mRNA Refseq	NM_008357
Protein Refseq	NP_032383
UniProt ID	P48346
Chromosome Location	8 C2; 8 38.0 cM
Function	Cytokine activity; Cytokine receptor binding

Rendering based on
PDB 2Z3Q



 Tel: 1-631-559-9269 1-516-512-3133

 Email: info@creative-biomart.com  Fax: 1-631-938-8127

 45-1 Ramsey Road, Shirley, NY 11967, USA