

## Recombinant Rat Il15ra Protein, His&GST-tagged

**Cat. No.** Il15ra-1663R    **Lot. No.** (See product label)

### SPECIFICATION

<b>Product Overview</b>	Recombinant Rat Il15ra Protein (Ile10-Thr239) with N-His&GST tag was expressed in E. coli.
<b>Species</b>	Rat
<b>Source</b>	E.coli
<b>ProteinLength</b>	Ile10-Thr239
<b>Description</b>	Predicted to enable interleukin-15 receptor activity and protein kinase binding activity. Involved in negative regulation of neuron projection development; receptor signaling pathway via JAK-STAT; and response to nutrient levels. Predicted to be located in cell surface and cytoplasmic vesicle. Predicted to be active in plasma membrane. Orthologous to human IL15RA (interleukin 15 receptor subunit alpha).
<b>Form</b>	Freeze-dried powder
<b>Molecular Mass</b>	Predicted Molecular Mass: 54.8 kDa Accurate Molecular Mass: 60 kDa
<b>Purity</b>	> 90%
<b>Applications</b>	Positive Control; Immunogen; SDS-PAGE; WB.
<b>Stability</b>	The thermal stability is described by the loss rate. The loss rate was determined by

 Tel: 1-631-559-9269    1-516-512-3133

 Email: [info@creative-biomart.com](mailto:info@creative-biomart.com)     Fax: 1-631-938-8127

 45-1 Ramsey Road, Shirley, NY 11967, USA

accelerated thermal degradation test, that is, incubate the protein at 37 centigrade for 48h, and no obvious degradation and precipitation were observed. The loss rate is less than 5% within the expiration date under appropriate storage condition.

**Storage**

Avoid repeated freeze/thaw cycles. Store at 2-8 centigrade for one month. Aliquot and store at -80 centigrade for 12 months.

**Storage Buffer**

20mM Tris, 150mM NaCl, pH8.0, containing 1mM EDTA, 1mM DTT, 0.01% SKL, 5% Trehalose and Proclin300.

**Reconstitution**

Reconstitute in 20mM Tris, 150mM NaCl (pH8.0) to a concentration of 0.1-1.0 mg/mL. Do not vortex.

## GENE INFORMATION

**Gene Name**

Il15ra interleukin 15 receptor, alpha chain [ *Rattus norvegicus* (Norway rat) ]

**Official Symbol**

Il15ra

**Synonyms**

IL15RA; interleukin 15 receptor, alpha chain;

**Gene ID**

690369

**mRNA Refseq**

XM\_002728509

**Protein Refseq**

XP\_002728555

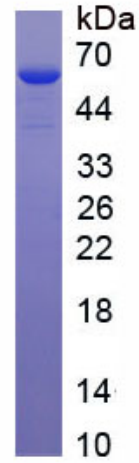
**UniProt ID**

F1M293

 Tel: 1-631-559-9269 1-516-512-3133

 Email: [info@creative-biomart.com](mailto:info@creative-biomart.com)  Fax: 1-631-938-8127

 45-1 Ramsey Road, Shirley, NY 11967, USA



 Tel: 1-631-559-9269 1-516-512-3133

 Email: [info@creative-biomart.com](mailto:info@creative-biomart.com)  Fax: 1-631-938-8127

 45-1 Ramsey Road, Shirley, NY 11967, USA