

Recombinant Mouse Il15ra protein, hFc-tagged

Cat. No. Il15ra-5698M **Lot. No.** (See product label)

SPECIFICATION

| | |
|-------------------------|---|
| Product Overview | Recombinant Mouse Il15ra protein(Q60819-1)(Gly33-Lys205), fused with C-terminal hFc tag, was expressed in HEK293. |
| Species | Mouse |
| Source | HEK293 |
| ProteinLength | Gly33-Lys205 |
| Tag | C-hFc |
| Form | Supplied as 0.22µm filtered solution in PBS (pH 7.4). |
| Bio-activity | Immobilized Human IL-15, No Tag at 5ug/ml (100ul/well) on the plate. Dose response curve for Mouse IL-15RA, hFc Tag with the EC50 of 55.6ng/ml determined by ELISA. |
| Molecular Mass | The protein has a predicted MW of 45.1 kDa. Due to glycosylation, the protein migrates to 75-82 kDa based on Tris-Bis PAGE result. |
| Endotoxin | Less than 1EU per µg by the LAL method. |
| Purity | > 95% as determined by Tris-Bis PAGE;> 95% as determined by HPLC |
| Storage | Valid for 12 months from date of receipt when stored at -80°C. Recommend to aliquot the protein into smaller quantities for optimal storage. Please do not repeated freeze- |

 Tel: 1-631-559-9269 1-516-512-3133

 Email: info@creative-biomart.com  Fax: 1-631-938-8127

 45-1 Ramsey Road, Shirley, NY 11967, USA

thaw cycles.

Reconstitution

It is recommended that sterile water be added to the vial to prepare a stock solution of 0.2 ug/ul. Centrifuge the vial at 4°C before opening to recover the entire contents.

GENE INFORMATION

Gene Name [IL15ra interleukin 15 receptor, alpha chain \[Mus musculus \]](#)

Official Symbol [IL15ra](#)

Synonyms IL15RA; interleukin 15 receptor, alpha chain; interleukin-15 receptor subunit alpha; IL-15RA; IL-15R-alpha; IL-15 receptor subunit alpha; AA690181;

Gene ID [16169](#)

mRNA Refseq [NM_008358](#)

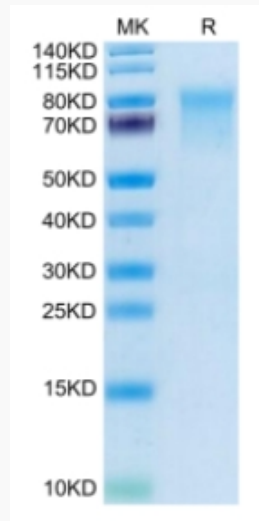
Protein Refseq [NP_032384](#)

 Tel: 1-631-559-9269 1-516-512-3133

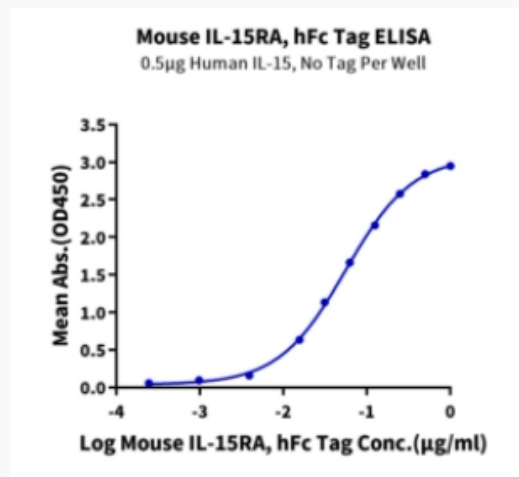
 Email: info@creative-biomart.com  Fax: 1-631-938-8127

 45-1 Ramsey Road, Shirley, NY 11967, USA

Tris-Bis PAGE



ELISA Data



 Tel: 1-631-559-9269 1-516-512-3133

 Email: info@creative-biomart.com  Fax: 1-631-938-8127

 45-1 Ramsey Road, Shirley, NY 11967, USA