

Active Recombinant Mouse Interleukin 16

Cat. No. II16-486M Lot. No. (See product label)

SPECIFICATION

Product Overview	Mouse IL-16 is comprised of 127 amino acids with a molecular weight of 13.2 kDa
Species	Mouse
Source	E.coli
Description	<p>Mouse IL-16 was originally described as Lymphocyte Chemoattractant Factor (LCF), is produced primarily by CD4 (+) and CD8 (+) T cells and acts as a chemoattractant for lymphocytes, monocytes, eosinophils, dendritic cells and Langerhanscells.</p> <p>Additionally, IL-16 has been reported to upregulate IL-2 receptor (CD25), induce progression of cells to the G (1) phase and suppresses HIV & SIV replication. Other cells which have been shown to express IL-16 are; B-cells, eosinophils, macrophages, epithelial cells, fibroblasts, microglial cells and keratinocytes. Human and Mouse IL-16 share a high degree of structural and functional similarity.</p>
Form	Lyophilized at a concentration of 1 mg/ml in 10mM NaP, PH 7.5
Purity	Purity Greater than 97% as determined by: Reducing and non-reducing SDS-PAGE.
Bio-activity	Recombinant mouse IL-16 is fully biologically active compared to standard. The ED50, as determined by dose-dependent chemotactic induction of mouse CD4+ T-cells, is 200ng/ml.
Physical Appearance	Sterile Filtered white lyophilized (freeze-dried) powder.

 Tel: 1-631-559-9269 1-516-512-3133

 Email: info@creative-biomart.com  Fax: 1-631-938-8127

 45-1 Ramsey Road, Shirley, NY 11967, USA

Solubility	Centrifuge vial before opening. When reconstituting the product, gently pipet and wash down the sides of the vial to ensure full recovery of the protein into solution. It is recommended to reconstitute the lyophilized product with sterile water at a concentration of 0.1 - 0.5 mg"s/ml, which can be further diluted into other aqueous solutions.
Purity Greater than 97% as determined by	Reducing and non-reducing SDS-PAGE.
Protein Content determined by	UV spectroscopy at 280 nm. Quantitation on SDS-PAGE against a known standard.
Endotoxin Level	Endotoxin level as measured by LAL is <0.01ng/ug or <0.1EU/ug.
Amino acid sequence	MHDLNSSTDS AASASAASDI SVESKEATVC TVTLEKTSAG LGFSLEGGKG SLHGDKPLTI NRIFKGDRTGEMVQPGDEIL QLAGTAVQGL TRFEAWNVIK ALPDGPVTIV IRRSLQCKQ TTASADS
Storage	Lyophilized product is very stable at -20 degrees. Reconstituted material should be aliquoted and frozen at -20. It is recommended to add a carrier protein (0.1% HSA or BSA) for long term storage.

GENE INFORMATION

Gene Name	Il16 interleukin 16 [<i>Mus musculus</i>]
Official Symbol	Il16
Synonyms	Il16; interleukin 16; KIAA4048; mKIAA4048
Gene ID	16170

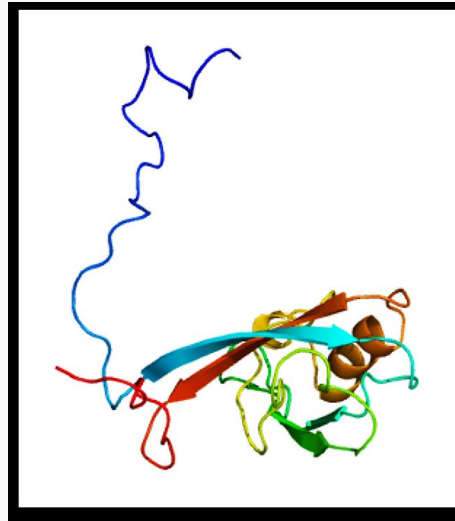
 Tel: 1-631-559-9269 1-516-512-3133

 Email: info@creative-biomart.com  Fax: 1-631-938-8127

 45-1 Ramsey Road, Shirley, NY 11967, USA

mRNA Refseq	NM_010551
Protein Refseq	NP_034681
UniProt ID	O54824
Chromosome Location	7 D2-D3; 7 41.2 cM
Function	cytokine activity; protein binding

PDB rendering based on 1i16.



 Tel: 1-631-559-9269 1-516-512-3133

 Email: info@creative-biomart.com  Fax: 1-631-938-8127

 45-1 Ramsey Road, Shirley, NY 11967, USA