

Active Recombinant Mouse Il17f Protein, His-Tagged

Cat. No. Il17f-01M Lot. No. (See product label)

SPECIFICATION

Product Overview	Recombinant mouse Il17f Protein, His-tagged was expressed in E. coli cell
Species	Mouse
Source	E.coli
Description	The protein encoded by this gene is a cytokine that shares sequence similarity with IL17. This cytokine is expressed by activated T cells, and has been shown to stimulate the production of several other cytokines, including IL6, IL8, and CSF2/GM-CSF. This cytokine is also found to inhibit the angiogenesis of endothelial cells and induce endothelial cells to produce IL2, TGFB1/TGFB, and monocyte chemoattractant protein-1.
Form	Lyophilized powder
AA Sequence	MRKNPKAGVPALQKAGNCPPLEDNTVRVDIRIFNQNQGISVPREFQNRSSSPWDYN ITRDPHRFPSEIAEAQCRHSGCINAQQQEDSTMN SVAIQQEILVLRREPQGCSNSFRLEKMLLKVGCTCVKPIVHQAA with polyhistidine tag at the C-terminus
Endotoxin	<0.1 EU per 1 µg of the protein by the LAL method.
Bio-activity	Measure by its ability to induce IL-6 secretion in 3T3 cells. The ED50 for this effect is <100 ng/mL.

 Tel: 1-631-559-9269 1-516-512-3133

 Email: info@creative-biomart.com  Fax: 1-631-938-8127

 45-1 Ramsey Road, Shirley, NY 11967, USA

Purity	>98% as determined by SDS-PAGE. Ni-NTA chromatography
Storage Buffer	The protein was lyophilized from a solution containing 20 mM sodium citrate, pH 4.5.
Reconstitution	It is recommended to reconstitute the lyophilized protein in sterile H ₂ O to a concentration not less than 100 µg/mL and incubate the stock solution for at least 20 min to ensure sufficient re-dissolved.
Storage	Lyophilized protein should be stored at -20°C. Upon reconstitution, protein aliquots should be stored at -20°C or -80°C.
Notes	Please use within one month after protein reconstitution.

GENE INFORMATION

Gene Name	Il17f interleukin 17F [<i>Mus musculus</i> (house mouse)]
Official Symbol	Il17f
Synonyms	IL-17F
Gene ID	257630
mRNA Refseq	NM_145856.2
Protein Refseq	NP_665855.2
UniProt ID	Q7TNI7

 Tel: 1-631-559-9269 1-516-512-3133

 Email: info@creative-biomart.com  Fax: 1-631-938-8127

 45-1 Ramsey Road, Shirley, NY 11967, USA



kDa

75-

63-

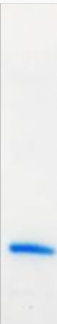
48-

35-

25-

17-

11-



Tel: 1-631-559-9269 1-516-512-3133

Email: info@creative-biomart.com Fax: 1-631-938-8127

45-1 Ramsey Road, Shirley, NY 11967, USA