

Recombinant Active Mouse IL17F Protein, His-tagged(C-ter)

Cat. No. II17f-152M Lot. No. (See product label)

SPECIFICATION

Product Overview	Recombinant Active Mouse IL17F Protein with His tag (C-ter) was expressed in E. coli.
Species	Mouse
Source	E.coli
Description	The protein encoded by this gene is a cytokine that shares sequence similarity with IL17. This cytokine is expressed by activated T cells, and has been shown to stimulate the production of several other cytokines, including IL6, IL8, and CSF2/GM-CSF. This cytokine is also found to inhibit the angiogenesis of endothelial cells and induce endothelial cells to produce IL2, TGFB1/TGFB, and monocyte chemoattractant protein-1. [provided by RefSeq, Jul 2008]
Form	Powder
Bio-activity	Determined by its ability to induce IL-6 secretion in 3T3 cells. The ED50 for this effect is < 100 ng/mL.
AA Sequence	MRKNPKAGVPALQKAGNCPPLEDNTVRVDIRIFNQNQGISVPREFQNRSSSPWDYN ITRDPHRFPSEIAEAQCRHSGCINAQQQEDSTMNSVAIQQEILVLRREPQGCSNSFR LEKMLLKVGCTCVKPIVHQA
Endotoxin	Endotoxin level is less than 0.1 EU/μg of the protein, as determined by the LAL test.

 Tel: 1-631-559-9269 1-516-512-3133

 Email: info@creative-biomart.com  Fax: 1-631-938-8127

 45-1 Ramsey Road, Shirley, NY 11967, USA

Purity	> 98% (by SDS-PAGE)
Applications	SDS-PAGE
Notes	For laboratory research only, not for drug, diagnostic or other use.
Storage	Lyophilized protein should be stored at -20°C. After reconstitution, aliquot and store at -20°C or -80°C for up to one month. Storage in frost free freezers is not recommended. Avoid repeated freeze/thaw cycles. Suggest spin the vial prior to opening.
Storage Buffer	20 mM Sodium citrate (pH 4.5)
Reconstitution	It is recommended to reconstitute the lyophilized protein in sterile water to a concentration not less than 100 µg/mL and incubate the stock solution for at least 20 min at room temperature to make sure the protein is dissolved completely.

GENE INFORMATION

Gene Name	IL17f interleukin 17F [Mus musculus]
Official Symbol	IL17f
Synonyms	IL17F; interleukin 17F; interleukin-17F; C87042; IL-17F;
Gene ID	257630
mRNA Refseq	NM_145856
Protein Refseq	NP_665855

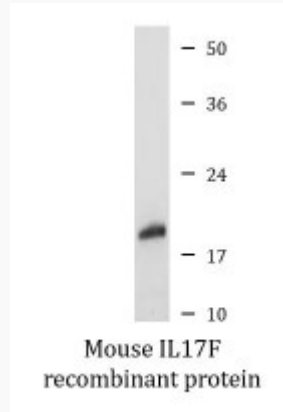
 Tel: 1-631-559-9269 1-516-512-3133

 Email: info@creative-biomart.com  Fax: 1-631-938-8127

 45-1 Ramsey Road, Shirley, NY 11967, USA



SDS-PAGE



Tel: 1-631-559-9269 1-516-512-3133

Email: info@creative-biomart.com Fax: 1-631-938-8127

45-1 Ramsey Road, Shirley, NY 11967, USA