

## Recombinant Rat Il17re protein, His-tagged

Cat. No. Il17re-7982R Lot. No. (See product label)

### SPECIFICATION

<b>Product Overview</b>	Recombinant Rat Il17re aa. (Asp457~Gly626) fused with N-terminal His tag was produced in E. coli cells.
<b>Species</b>	Rat
<b>Source</b>	E.coli
<b>ProteinLength</b>	Asp457~Gly626
<b>Form</b>	Freeze-dried powder
<b>Molecular Mass</b>	20kDa as determined by SDS-PAGE reducing conditions.
<b>Endotoxin</b>	<1.0EU per 1ug (determined by the LAL method)
<b>Purity</b>	>95%
<b>Characteristic</b>	The isoelectric point is 8.9.
<b>Applications</b>	Positive Control; Immunogen; SDS-PAGE; WB
<b>Stability</b>	The thermal stability is described by the loss rate of the target protein. The loss rate was determined by accelerated thermal degradation test, that is, incubate the protein at 37°C for 48h, and no obvious degradation and precipitation were observed. (Referring from China Biological Products Standard, which was calculated by the

 Tel: 1-631-559-9269 1-516-512-3133

 Email: [info@creative-biomart.com](mailto:info@creative-biomart.com)  Fax: 1-631-938-8127

 45-1 Ramsey Road, Shirley, NY 11967, USA

Arrhenius equation.) The loss of this protein is less than 5% within the expiration date under appropriate storage condition.

**Storage**

Avoid repeated freeze/thaw cycles. Store at 2-8°C for one month. Aliquot and store at -80°C for 12 months.

**Concentration**

200µg/mL

**Storage Buffer**

10mM PBS, pH7.4, containing 1mM DTT, 5% trehalose and 0.01% sarcosyl.

**Reconstitution**

Reconstitute in 10mM PBS (pH7.4) to a concentration of 0.1-1.0 mg/mL. Do not vortex.

## GENE INFORMATION

**Gene Name**

Il17re interleukin 17 receptor E [ *Rattus norvegicus* (Norway rat) ]

**Official Symbol**

Il17re

**Synonyms**

Il17re; interleukin 17 receptor E; interleukin-17 receptor E; IL-17 receptor E; IL-17RE

**Gene ID**

362417

**mRNA Refseq**

NM\_001004091.1

**Protein Refseq**

NP\_001004091.1

**UniProt ID**

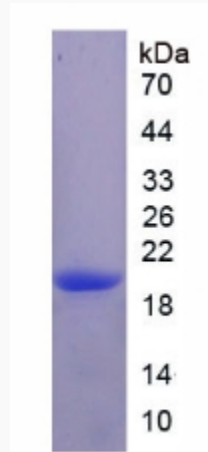
Q6AZ51

 Tel: 1-631-559-9269 1-516-512-3133

 Email: [info@creative-biomart.com](mailto:info@creative-biomart.com)  Fax: 1-631-938-8127

 45-1 Ramsey Road, Shirley, NY 11967, USA

**SDS-PAGE**



 Tel: 1-631-559-9269 1-516-512-3133

 Email: [info@creative-biomart.com](mailto:info@creative-biomart.com)  Fax: 1-631-938-8127

 45-1 Ramsey Road, Shirley, NY 11967, USA